

Sams^onite

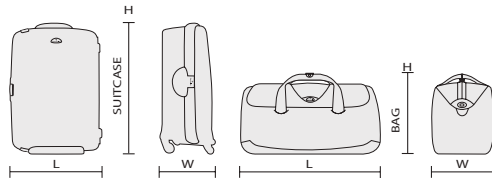


CATALOGUE 2023

GENERAL INFO

Measurements

The dimensions shown in the tables are the exterior dimensions (including handles, wheels, bottom glides, side pockets and other external parts).



Measurements of volume, dimensions and weight are carried out in the Samsonite laboratories using procedures whereby tolerances up to 1.5 cm in dimensions and 5 % in weight and volume cannot be excluded.

Samsonite reserves the right to amend the specifications, colours, dimensions and weight of any product without prior warning. Colour deviation may occur due to the printing technique used.

Product Codes

All Samsonite product codes appear as follows: S'Cure Eco Spinner 55:

128014: MODEL CODE S'CURE ECO SPINNER 55

Quality

We deliver the quality. You conduct the test. Every journey. Every day. You might not have given it any thought, but each Samsonite product undergoes the most stringent controls and tests before it goes on the market. Of course, the ultimate test is conducted by you, the customer.



TUMBLE TEST



HANDLE TEST



DROPTEST



WHEEL TEST



ZIPPER TEST



LOCKS TEST

Discover our service after sales website:

Go to **supportandgo.com** to look up a service point, check lock instructions, learn more about the terms & conditions of the warranty, consult FAQ's and find information on parts & service.

Register your Samsonite online and receive exclusive offers, sneak previews, gift ideas, new product announcements and more on **my.samsonite.com**

#MySamsonite



www.samsonite.com



[instagram.com/mysamsonite](https://www.instagram.com/mysamsonite)



[facebook.com/samsoniteofficial](https://www.facebook.com/samsoniteofficial)



[pinterest.com/mysamsonite](https://www.pinterest.com/mysamsonite)



[youtube.com/samsoniteeurope](https://www.youtube.com/samsoniteeurope)



[twitter.com/mysamsonite](https://www.twitter.com/mysamsonite)



[linkedin.com/company/samsonite](https://www.linkedin.com/company/samsonite)



HISTORY

Milestones

Ever since its earliest days, Samsonite has been the most innovative luggage manufacturer in the world. It has led the industry in using new materials and creating new designs. Here are just a few of the luggage landmarks that Samsonite has created over the years, as part of its tradition of innovation.

1910



The Wooden Trunk

Jesse Shwayder, the company's original founder, redesigns the basic wooden trunk with shiny metal studs and corner-pieces making it more eye-catching and "strong enough to stand on."

1941



Streamlite™

In an early use of a new cutting-edge technology, the Streamlite suitcase is clad in a lightweight lithographed paper to create a "rawhide" effect. Its tapered shape is destined to become a classic within the industry.

1958



Silhouette™

The most advanced luggage made up to that time, included a new modern shape with recessed hardware to protect it from the wear and tear of travel.

1962



Classic Attaché

The first ABS Attaché case is created for a new generation of business men. This sleek case soon became emblematic for the early-60s Mad Men-style executive.

1998



Xylem™

Introduction of the first Samsonite suitcase in aluminium. Its matching attaché would go on to play a key supporting role in the James Bond movie "The World Is Not Enough," where it was used to tote bundles of cash around Europe.

2004



Spinner®

Samsonite markets the four-wheel Spinner, which could be steered in any direction and toted right alongside the traveller. This innovation radically improved mobility and convenience for travellers as they navigated their way through modern airports.

2008



Cosmolite®

Samsonite launches Cosmolite as an answer to the market's increasing demand for stronger and lighter suitcases. It was the lightest and strongest Samsonite case yet developed. Its sea shell inspired design became an instant success and the collection went on to win many design awards, including Red Dot Award "Best of the Best."

2015



Neopulse™

With the launch of Neopulse, Samsonite further strengthens its production capacity in Europe. The Made in Europe label, in combination with a strong design and competitive weight advantage are what made this collection an instant commercial success.

1969



Saturn™

As a response to the rising demand of lightweight luggage, Samsonite launches its first Polypropylene suitcase with injection-moulded shells. The Saturn collection was the niftiest iteration of lightness and strength yet.

1974



Silhouette Blue

The introduction of wheels to the Silhouette frame transformed the luggage world for ever. The case was a true revolution in travel comfort and convenience, targetting a new generation of frequent flyers.

1986



Oyster™

Oyster was the first suitcase with a three-point locking system, providing ultimate strength and security. The case was an immediate triumph, with 140.000 bought in its first year, it was the fastest-selling case of all time.

1994



Ziplite™

With Ziplite, Samsonite introduced its first Polypropylene suitcase with a zipper closure, thus combining both the benefits of hardside and softside luggage. Sales took off quickly and the market for hardside suitcases with zippers was born.

2018



Eco Collection

Worldwide, Samsonite launches 23 product lines that are made from recycled Polypropylene or Recyclex™, a fabric made from 100% post-consumer recycled PET plastic bottles.

2019



S'Cure Eco post consumer-waste

S'Cure Eco is the first suitcase on the planet repurposing post-consumer recycled plastic waste. The suitcase's shells are made using recycled Polypropylene from post-consumer household waste, turning a material too valuable to be thrown away into a high-quality functional product.

2020



110 Year Anniversary

Ready for the next chapter: we celebrate our 110 year anniversary with brand new novelty collections.

CONTENTS

HARDSIDE SELECTION			6		SOFTSIDE SELECTION			54	
Lite-Box Alu		A111	8		Spectrolite 3.0 TRVL		B670	56	
Lite-Box		7114	10		D'Lite		B739	58	
Major-Lite	N	D163	12		Respark		C528	60	
C-Lite		A154	14		Vaycay	N	C979	64	
C-Lite		A154	16		Litebeam	N	D125	66	
C-lite Disney		B555	18						
Proxis		A515	20		SOFTSIDE DEALER				
Attrix	N	D027	22		Airea		B359	70	
Neopod		C039	24		Base Boost		7104	72	
Nuon		B434	26		Citybeat		A760	74	
Ibon		B432	28						
Upscape		C491	30		CASUAL SELECTION				
StackD		B435	32		Ecodiver		C192	78	
StackD Disney		C737	34		Roader		C520	82	
Magnum Eco		C024	36						
Essens	N	D140	38		CASUAL DEALER				
HARDSIDE DEALER			40		Midtown		5339	88	
Lite-Cube DLX		2837	42		BUSINESS & BAGS SELECTION				
Lite-Cube		2434	44		PRO-DLX 6	N	D236	92	
Lite-Shock		3160	46		Spectrolite 3.0		B656	96	
S'Cure Eco		9477	48		Biz2Go		C376	98	
S'Cure Eco		9477	50		XBR 2.0	N	D109	100	
S'Cure		1103	52		Securipak		A745	102	
					Securipak S		A844	104	

BUSINESS & BAGS DEALER 106

Openroad 2.0	B650	108
Vectura EVO	A202	110
StackD Biz	C294	112
Litepoint	B441	114
Mysight	B514	116
Dye-Namic	N D105	118
Guardit 2.0	9458	120
Network 4	C410	122
Sacksquare	N D106	124
Sackmod	N D104	126
Airglow Sleeves	5405	129
Zalia 3.0	N D327	130
Openroad Chic 2.0	B997	132
Be-Her	C811	134
Workationist	C431	136
Eco Wave	A884	138
Ongoing	C815	140
Guardit Classy	B999	142
Move 4.0	C813	144

KIDS & LICENSES 146

Dream2Go	N C872	148
Dream2Go Disney	N C875	150
Happy Sammies Eco	B100	152
Happy Sammies	8241	156
MARVEL Ultimate 2.0 - Spider-Man	8744	158
Disney Ultimate 2.0 - Minnie Glitter	8744	159
Disney Ultimate 2.0 - Mickey and Donald Stars	8744	160
Disney Ultimate 2.0 - Cars	N 8744	161
Disney Ultimate 2.0 - Frozen	8744	162

UMBRELLAS 164

Alu Drop S	9061	166
Rain Pro	1999	168
Wood Classic S	9063	170

ACCESSORIES 172

Pack-sized	D135	174
GLOBAL TRAVEL ACCESSORIES		
Luggage Accessories	9467	176
Packing Accessories	9467	178
Comfort Travelling	9467	180
Electronic Accessories	9467	182

TOILET KITS 183

C-Lite Toilet Kit	C428	184
Respark Toilet Kit	D008	186
StackD Toilet Kit	C430	188

LEATHER GOODS 190

Alu Fit	A865	192
PRO-DLX 6 SLG	C823	194
Flagged SLG	C043	198
Veggy SLG	C824	200
Attack 2 SLG	A246	202

OVERVIEW 206**GENERAL INFO 214**

LITE-BOX ALU		8
LITE-BOX		10
MAJOR-LITE	NEW	12
C-LITE		14
C-LITE		16
C-LITE DISNEY		18
PROXIS		20
ATTRIX	NEW	22
NEOPOD		24
NUON		26
IBON		28
UPSCAPE		30
STACKD		32
STACKD DISNEY		34
MAGNUM ECO		36
ESSENS	NEW	38



LITE-BOX ALU™

A111

Style and performance reach new heights thanks to Lite-Box Alu's robust, yet refined aluminium shells and superior features.

- Premium-quality anodised aluminium
- Each dent or scratch tells your unique travel experience
- Spacious interior with small pockets, packing straps and floating divider pads to compress your belongings carefully



Aluminium
1004



Black
1041



NEW

Gradient Midnight Blue
A016

LIMITED
10
year
WARRANTY



Samsonite-branded locks with integrated TSA* function



Emboss your initials on the personalisation tag



Smooth-rolling double wheels with ball bearing reduce noise





Samsonite Lite-B...



Selection

HARDSIDE



122705

Spinner 55

40 x 55 x 23

40 l

4.7 kg

abc



122706

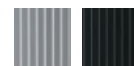
Spinner 69

47 x 69 x 27

71 l

5.9 kg

abc



122707

Spinner 76

51 x 76 x 28

91 l

6.6 kg

abc



132693

Trunk 74

41 x 74 x 37

93 l

6.5 kg

abc



132694

Trunk 80

41 x 80 x 37

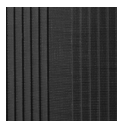
106 l

6.8 kg

abc

The contemporary boxy Lite-Box design with corner protections will surpass your expectations on lightness and strength.

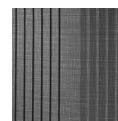
- Made with CURV® material*: extremely strong, incredibly light
- Made in Europe
- Voluminous and boxy design
- Silver detailing
- Both compartments have a divider pad in premium lining and removable cross ribbons



Black
1041



Deep Blue
1277



Eclipse Grey
2957



LIMITED
10 year
WARRANTY



Eye-catching corners add strength in the right places



Double tube pull handle (elongated on check-in sizes)



Smooth-rolling double wheels enable optimum manoeuvrability





Lite-P



Selection

HARDSIDE



79297

Spinner 55

40 x 55 x 20

38 l

2.2 kg

abc



79299

Spinner 69

46 x 69 x 27

75 l

2.8 kg

abc



79300

Spinner 75

50 x 75 x 29

98 l

3.1 kg

abc



79301

Spinner 81

53 x 81 x 31

124 l

3.5 kg

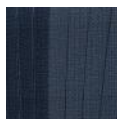
abc

Designed to perfection, Major-Lite exceeds expectations in terms of design, lightness, and strength. The CURV® woven technology combined with self-reinforced design and top-notch features guarantee an incredible travel experience.

- Made with CURV® material: Extremely strong, incredibly light
- Made in Europe
- Outstanding design and detailing
- Interior lining made from post-consumer recycled PET plastic bottles (Recyclax™)
- Practical packing thanks to a fixed divider pad, a removable divider pad with a large pocket and packing straps



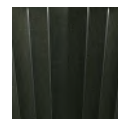
Black
1041



Midnight Blue
1549



Saffron Yellow
2048



Climbing Ivy
9199



LIMITED
10 year
WARRANTY



RECYCLAX™

Emboss your initials on the personalisation tag



Double tube pull handle, elongated on check-ins, with integrated ID tag



Suspension wheels reducing noise and vibrations





147117

Spinner 55 EXP

40 x 55 x 20/23

Est. 37/43 l

Est. 2.2 kg



147119

Spinner 69

46 x 69 x 29

Est. 69 l

Est. 2.8 kg



147120

Spinner 77

51 x 77 x 32

Est. 97 l

Est. 3.1 kg



The iconic design of C-Lite guarantees incredible lightness and top-notch comfort, taking your travel experience to the next level.

- Made with CURV® material: extremely strong, incredibly light
- Made in Europe
- Interior lining made out of Recyclex™, a textile engineered from post-consumer recycled PET plastic bottles
- Wide range of sizes including Spinner 55 EXP and Spinner 86



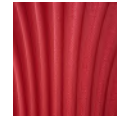
Off White
1627



Black
1041



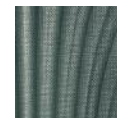
Midnight Blue
1549



Chili Red
1198



Deep Blue
1277



Metallic Green
1542

MATCHES

C-LITE TOILET KIT P. 184

LIMITED
10
year
WARRANTY



RECYCLEX™



Silent and smooth-rolling double wheels



Integrated USB port on cabins, incl. power bank pouch in the interior



Double tube pull handle, elongated on check-ins, with integrated ID tag



reddot design award
best of the best 2010



Samsonite C-Lite - ...



Selection

HARDSIDE



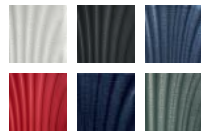
122859
Spinner 55

	40 x 55 x 20
	36 l
	1.9 kg



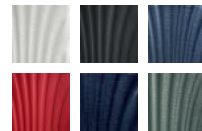
134679
Spinner 55 EXP

	40 x 55 x 20/23
	36/42 l
	2.1 kg



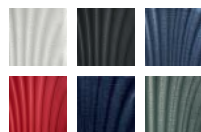
122860
Spinner 69

	46 x 69 x 29
	68 l
	2.5 kg



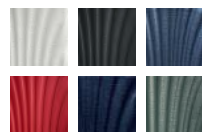
122861
Spinner 75

	51 x 75 x 31
	94 l
	2.8 kg



122862
Spinner 81

	55 x 81 x 34
	123 l
	3.1 kg



122863
Spinner 86

	58 x 86 x 36
	144 l
	3.6 kg



The iconic design of C-Lite guarantees incredible lightness and top-notch comfort, taking your travel experience to the next level.

- Made with CURV® material: extremely strong, incredibly light
- Made in Europe
- Interior lining made out of Recyclex™, a textile engineered from post-consumer recycled PET plastic bottles



Silent and smooth-rolling double wheels



Integrated USB port on cabin size, incl. power bank pouch in the interior



Double tube pull handle, elongated on check-ins, with integrated ID tag













reddot design award
best of the best 2010



141368










Spinner 55 EXP LTD

	40 x 55 x 20/23
	36/42 l
	2.1 kg
      	



141369










Spinner 69 LTD

	46 x 69 x 29
	68 l
	2.5 kg
     	



141370

Spinner 75 LTD

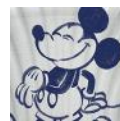
	51 x 75 x 31
	94 l
	2.8 kg
     	

C-LITE DISNEY™

B655

Set off on magical new adventures together with Mickey Mouse. Whimsical and well-engineered, C-Lite Disney is the perfect partner to travel and dream.

- Made with CURV® material: Extremely strong, incredibly light
- Made in Europe
- Interior lining made from post-consumer recycled PET plastic bottles (Recyclex™)
- Magical Mickey Mouse print on the exterior and too cute to miss details on the interior



NEW

Mickey Mouse on the move
A203

Disney

© Disney

LIMITED
10
year
WARRANTY



recyclex™



Silent and smooth-rolling double wheels



Integrated USB port on cabin size, incl. power bank pouch in the interior



Double tube pull handle, elongated on check-ins, with integrated ID tag






reddot design award
best of the best 2010



144379

Spinner 55 EXP Disney




	40 x 55 x 20/23
	36/42 l
	2.1 kg

TSA       abc



135802

Spinner 69 Disney




	46 x 69 x 29
	68 l
	2.5 kg

TSA     abc



135803

Spinner 75 Disney

	51 x 75 x 31
	94 l
	2.8 kg

TSA     abc

Unlock a new era of high-performance travelling with Proxis. Innovative design, built to last and fully equipped, for a resilient future.

- Made in Europe
- Made from Roxkin™ material, an innovative multi-layered material highly resilient to shocks, offering remarkable strength and lightness
- Includes Samsonite wecare service plan, a unique offering worry-free repair service.



Silver
1776



Petrol Blue
1686



Black
1041



Honey Gold
6856



Matt Climbing Ivy
9781



Matt Graphite
4804



LIMITED
10 year
WARRANTY



Samsonite
wecare



Integrated USB port and expandability on cabin sizes



Emboss your initials on the personalisation tag



Double tube pull handle, elongated on check-in sizes, with integrated ID tag





Selection

HARDSIDE



126035
Spinner 55 EXP

	40 x 55 x 20/23
	38/44 l
	2.2 kg



140087
Spinner 55 EXP
Length 35 cm

	35 x 55 x 23/26
	38/44 l
	2.1 kg



126041
Spinner 69

	48 x 69 x 29
	75 l
	2.7 kg



126042
Spinner 75

	51 x 75 x 31
	98 l
	2.9 kg



126043
Spinner 81

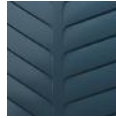
	57 x 81 x 32
	125 l
	3.5 kg

Built to go the distance, Attrix offers remarkable shock resistance, lightness and travel comfort thanks to the innovative Roxkin™ material, durable features and unique service plan. Designed, engineered and made in Europe.

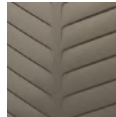
- Made in Europe
- Made from Roxkin™, an innovative multi-layered material highly resilient to shocks, offering remarkable strength and lightness
- Includes Samsonite wecare, a unique service plan offering worry-free repair service. Discover more on our wecare page
- Interior lining made from post-consumer recycled PET plastic bottles (Recyclex™)



Red
1726



Steel Blue
1827



Dune
1304



Basil Green
A204



Anthracite
1009



Suspension wheels reducing noise and vibrations

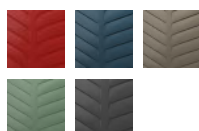


Double tube pull handle, with integrated ID tag



Featured interior with divider pad, pockets and lowered cross ribbons





146116

Spinner 55 EXP

40 x 55 x 20/23

Est. 38/44 l

Est. 2.0 kg



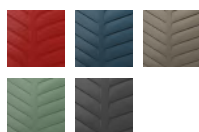
146117

**Spinner 55 EXP
Length 35 cm**

35 x 55 x 23/26

Est. 38/44 l

Est. 1.9 kg



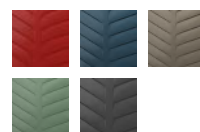
146118

Spinner 69

45 x 69 x 27

Est. 71 l

Est. 2.5 kg



146119

Spinner 75

52 x 75 x 30

Est. 96 l

Est. 2.7 kg



146120

Spinner 81

55 x 81 x 33

Est. 124 l

Est. 3.3 kg



Travel with ease and in style with Neopod. Each cabin luggage is designed to perfection while offering unique and smart easy access solutions surpassing your needs in our fast-paced world.

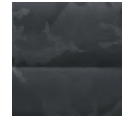
- Made from premium, lightweight Polycarbonate with scratch resistant finishing, premium PU and recycled PET fabric
- Hidden expandability
- TSA008 lock for extra security, closing each compartment separately
- Practical packing thanks to divider pads, multiple pockets including wet pocket and packing straps
- Removable and hand-washable interior lining



Black
1041



Midnight Blue
1549



Camo Black
5046



NEW

Sage Green
2017



Easy access front pocket for all your essentials like laptop, tablet, ...



Slide out pouch with multiple pockets and integrated USB A & C port



Suspension wheels reduce noise and vibrations





Samsonite Neopo...



Selection

HARDSIDE



139874

Spinner 55 EXP Easy Access

	40 x 55 x 23/27
	41/48 l
	3.3 kg
	26.7 cm/10.5" - 26.6 x 18.3 x 1.5 cm
	39.6 cm/15.6" - 37.5 x 25.9 x 2.8 cm



139872

Spinner 55 EXP Slide Out Pouch

	40 x 55 x 20/23
	38/44 l
	2.8 kg

Nuon, designed for perfection and formed for functionality.

- Contemporary, boxy design with distinctive detailing
- Made from premium-quality, lightweight Polycarbonate (only 3.6 kg for Spinner 75 cm)
- High packing capacity and expandability of 3 cm (hidden expansion on cabin, regular on check in models)
- Practical packing thanks to the divider pad, removable divider pad with large pocket and compression straps. Extra pocket for power bank on the cabin
- Removable and hand-washable interior lining
- Interior lining made from post-consumer recycled PET plastic bottles (Recyclex™)



Metallic Red
1544



Matt Silver
4052



Matt Graphite
4804



Metallic Dark Blue
9015



NEW

Matt Powder Pink
A017



NEW

Metallic Ocean Blue
A018

LIMITED
5
year
WARRANTY



RECYCLEX™



Anti-theft security zipper



TSA008 lock for extra security, with integrated USB A & C port on cabin



Suspension wheels reduce noise and vibrations





Selection

HARDSIDE



134399

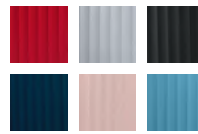
Spinner 55 EXP

40 x 55 x 20/23

38/42 l

2.5 kg

abc



134400

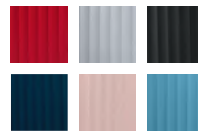
Spinner 69 EXP

45 x 69 x 28/31

79/86 l

3.2 kg

abc



134402

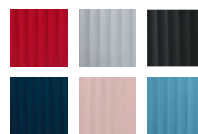
Spinner 75 EXP

49 x 75 x 30/33

100/110 l

3.6 kg

abc



134403

Spinner 81 EXP

53 x 81 x 31/34

125/137 l

3.9 kg

abc

Ibon, the perfect blend between innovation and outstanding design, sets new standards thanks to the one-point lock opening, multiple carry handles and innovative interior.

- Made from Polypropylene with scratch resistant textures: strong and robust
- Multiple carry handles to ensure optimal ergonomics
- Practical and compressible interior. Small packing footprint fitting tiny spaces
- Interior lining made from post-consumer recycled PET plastic bottles (Recyclex™)



Black
1041



Dark Blue
1247



Off White
1627



Yellow
1924



Secure one-point closing lock with integrated TSA function



Suspension wheels reduce noise and vibrations



Interior with click and compress divider system and carry handle





Samsonite Ibo...



Selection

HARDSIDE



134382

Spinner 76

	50 x 76 x 32
	102 l
	4.9 kg

Meet Upscape, a lightweight statement designed for you. Enjoy carefree travel thanks to expandability, suspension wheels and a featured and hand-washable interior.

- Made from robust & scratch resistant Polypropylene
- Ultra light: only 3.4 kg for Spinner 75 EXP
- TSA008 lock for extra security, with integrated USB A & C port on cabin
- Practical packing thanks to divider pad with 2 pockets and compression packing straps
- Double tube pull handle with integrated ID tag
- Interior lining made from post-consumer recycled PET plastic bottles (Recyclex™)



Black
1041



Blue Nights
2165



Yellow
1924



Climbing Ivy
9199



NEW

Petrol Blue
1686



NEW

Tangerine Orange
7976

LIMITED
5 year
WARRANTY



RECYCLEX™



Removable and hand-washable interior lining



Suspension wheels reduce noise and vibrations



Expandability, up to 12L extra volume





Selection

HARDSIDE



143108

Spinner 55 EXP

	40 x 55 x 20/23
	39/45 l
	2.3 kg



143109

Spinner 68 EXP

	47 x 68 x 28/31
	75/83 l
	3.0 kg



143110

Spinner 75 EXP

	51 x 75 x 30/33
	104/114 l
	3.4 kg



143111

Spinner 81 EXP

	54 x 81 x 34/37
	133/145 l
	3.9 kg

StackD, designed for the modern traveller and engineered to make journeys effortless thanks to high-quality materials and components.

- Made of durable Polycarbonate
- Hidden expandability on cabins
- Matte shells with high scratch resistance
- Practical, modern interior includes divider pad, compression straps and pockets
- Interior lining made from post-consumer recycled PET plastic bottles (Recyclex™)



Rose
1751



Forest
1338



Navy
1596



Black
1041



NEW

Lavender
1491



NEW

Sand
1775

MATCHES

STACKD BIZ P. 112 AND STACKD TOILET KIT P. 188



Integrated USB port on cabin sizes, incl. power bank pouch in the interior



Integrated hook for personal belongings



Easy-access cabin includes laptop and tablet compartment





Samsonite Stack...



Selection

HARDSIDE

NEW



146986

Beauty Case

35 x 25 x 23

14 l

0.8 kg



134638

Spinner 55 EXP

40 x 55 x 20/23

35/42 l

2.8 kg



135418

Spinner 55 EXP Easy Access

40 x 55 x 23/26

39/46 l

3.1 kg

26.7 cm/10.5" - 26.6 x 18.3 x 1.5 cm

39.6 cm/15.6" - 37.5 x 25.9 x 2.8 cm



134639

Spinner 68

46 x 68 x 28

71 l

3.7 kg



134640

Spinner 75

50 x 75 x 30

96 l

4.3 kg



134641

Spinner 81

54 x 81 x 33

126 l

4.9 kg



STACKD DISNEY™

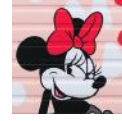
C737

Stand out with Stackd Disney thanks to the head-turning designs, high-quality materials and great features. Adventure guaranteed!

- Made of durable Polycarbonate
- Hidden expandability
- Matte shell with high scratch resistance
- Practical, modern interior includes divider pad, compression straps and pockets
- Double tube pull handle with integrated ID tag
- Interior lining made from post-consumer recycled PET plastic bottles (Recyclex™)

Disney
© Disney

MARVEL®
© MARVEL



Minnie Bow
5424



Black Panther
A020



NEW
Marvel Comics
4528

LIMITED
5
year
WARRANTY



RECYCLEX™



Integrated USB port incl. power bank pouch in the interior



Integrated hook for personal belongings



Beautiful detailing on exterior and interior





144132

Spinner 55 EXP Disney

 44 x 55 x 20/23

 35/42 l

 2.8 kg



146191

Spinner 55 EXP Marvel

 40 x 55 x 20/23

 35/42 l

 2.8 kg



NEW



146191

Spinner 55 EXP Marvel

 40 x 55 x 20/23

 35/42 l

 2.8 kg

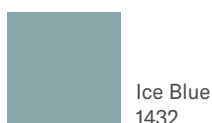
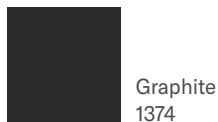
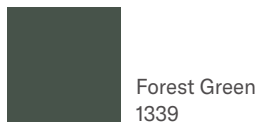
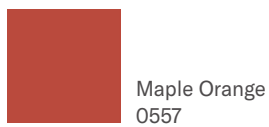


MAGNUM ECO™

C024

Our responsible journey in the spotlight! Magnum Eco reduces waste while offering top notch security, lightness and high packing capacity.

- Made in Europe
- Shells made from at least 70% post-consumer recycled Polypropylene waste
- Interior lining made from post-consumer recycled PET plastic bottles (Recyclex™)
- Extraordinary light and high packing capacity: only 4.2kg for Spinner 75



Secure and easy to use 3-point locking system with integrated TSA lock



Practical interior with two height adjustable divider pads and pocket



Perfect component integration: double wheels, ID tag, ...





Samsonite Magnu...



Selection

HARDSIDE



139845

Spinner 55

40 x 55 x 20

38 l

2.6 kg

abc



139846

Spinner 69

48 x 69 x 30

82 l

3.8 kg

abc



139847

Spinner 75

51 x 75 x 32

104 l

4.2 kg

abc



139848

Spinner 81

55 x 81 x 36

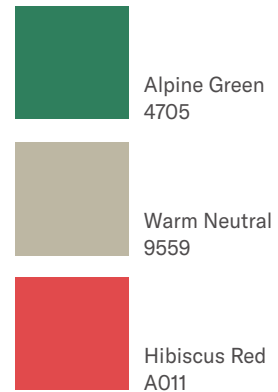
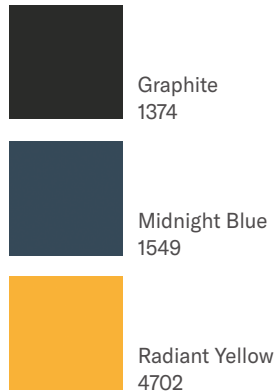
139 l

4.6 kg

abc

Discover Essens. The secure travel companion, made from recycled materials, offers an immense packing capacity and a new and unique packing system. Ready for a carefree and lightweight trip!

- Made in Europe
- Immensely lightweight with a high packing capacity: only est. 4.2 kg for the Spinner 75
- Made out of recycled materials (Recyclex™)
 - Shells made from at least 70% post-consumer recycled Polypropylene waste
 - Interior lining made from post-consumer recycled PET plastic bottles
- Self-repair friendly
- Packfix™ interior system: Two voluminous packing cubes which are removable, hand-washable and easy to lift and carry thanks to carry handles on either side



Secure and easy to use 3 point locking system with integrated TSA008 lock



Make it yours with uniquely designed stickers



Suspension wheels reducing noise and vibrations





146909

Spinner 55

	40 x 55 x 20
	Est. 39 l
	Est. 2.6 kg



146911

Spinner 69

	49 x 69 x 30
	Est. 88 l
	Est. 3.7 kg



146912

Spinner 75

	52 x 75 x 33
	Est. 111 l
	Est. 4.2 kg



LITE-CUBE DLX

42

LITE-CUBE

44

LITE-SHOCK

46

S'CURE ECO

48

S'CURE ECO

50

S'CURE

52



LITE-CUBE DLX™

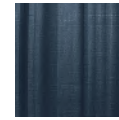
2837

A first-class travel experience thanks to the premium leather details and superior features of the Lite-Cube DLX.

- Made with CURV® material: extremely strong, incredibly light
- Made in Europe
- Fully-featured interior including floating divider, laundry bag, the cabin size has an extra removable wet pocket



Aluminium
1004



Midnight Blue
1549

LIMITED
10 year
WARRANTY



Leather soft touch handles and details



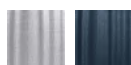
Unique metallised finishing on the Aluminium colour



Ultra silent, smooth-rolling wheels



reddot award 2016
winner



61242

Spinner 55

	40 x 55 x 20
	36.5 l
	2.3 kg

TSA abc

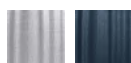


61243

Spinner 68

	45 x 68 x 28.5
	67.5 l
	2.9 kg

TSA abc

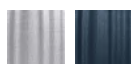


61244

Spinner 76

	50 x 76 x 32
	96 l
	3.2 kg

TSA abc



61245

Spinner 82

	54.5 x 82 x 34.5
	122 l
	3.6 kg

TSA abc

Lite-Cube combines timeless style and lightness with contemporary comfort.

- Made with CURV® material: extremely strong, incredibly light
- Made in Europe



Ivory Gold
1173



Graphite
1374



LIMITED
10
year
WARRANTY



Double wheels for optimum manoeuvrability

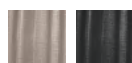


Soft touch double tube wheel handle with integrated ID tag



Highly featured interior, made of premium lining



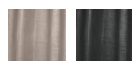


58622

Spinner 55

	40 x 55 x 20
	36.5 l
	2.2 kg

TSA abc

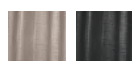


58623

Spinner 68

	45 x 68 x 28.5
	67.5 l
	2.8 kg

TSA abc

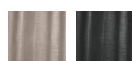


58624

Spinner 76

	50 x 76 x 32
	96 l
	3.1 kg

TSA abc



58625

Spinner 82

	54.5 x 82 x 34.5
	122 l
	3.5 kg

TSA abc

Pushing the limits of innovation, Lite-Shock is our lightest hardside with maximum impact resistance.

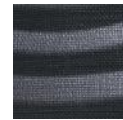
- Made with CURV® material: extremely strong, incredibly light
- Made in Europe
- Lightweight and shock-absorbing shell design: only 2.5 kg for Spinner 75
- Functional, lightweight interior



Sand
1775



Petrol Blue
1686



Black
1041

LIMITED
10 year
WARRANTY



Shock-absorbing corners give extra strength



Single tube wheel handle with integrated ID tag



Innovative one-slot lock to secure your belongings



reddot design award
winner 2015



62764

Spinner 55

	40 x 55 x 20
--	--------------

	36 l
--	------

	1.7 kg
--	--------

TSA abc



62765

Spinner 69

	47 x 69 x 29
--	--------------

	73 l
--	------

	2.3 kg
--	--------

TSA abc



62766

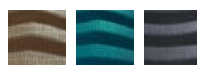
Spinner 75

	51.5 x 75 x 31
--	----------------

	98.5 l
--	--------

	2.5 kg
--	--------

TSA abc



62767

Spinner 81

	55 x 81 x 33
--	--------------

	124 l
--	-------

	2.8 kg
--	--------

TSA abc

S'Cure Eco, the first collection made out of circular Polypropylene created from post-consumer waste. Sustainable yet stylish!

- Made in Europe
- Constructed out of high-quality recycled materials
- Shells made from at least 70% post-consumer recycled Polypropylene waste
- Interior lining made from post-consumer recycled PET plastic bottles (Recyclex™)



Navy Blue
1598



Forest Grey
5587

LIMITED
5
year
WARRANTY



RECYCLEX™



Double tube pull handle and double wheels for optimal comfort



Secure and easy to use 3-point locking system



Seal to limit moisture penetration






128014
Spinner 55
Post Consumer

 40 x 55 x 20

 34 l

 2.9 kg



128015
Spinner 69
Post Consumer

 49 x 69 x 29

 79 l

 4.2 kg



128016
Spinner 75
Post Consumer

 52 x 75 x 31

 102 l

 4.6 kg



135147
Spinner 81
Post Consumer

 55 x 81 x 35

 138 l

 5.0 kg



The S'Cure Eco fits perfectly within Samsonite's philosophy to reduce and recycle waste whilst creating secure and robust products.

- Made in Europe
- Shells constructed out of a minimum of 85 % recycled Polypropylene (waste from Samsonite's own production process)
- Interior lining made from post-consumer recycled PET plastic bottles (Recyclax™)



Eco Black
L470

LIMITED
5
year
WARRANTY



RECYCLAX™



Logo and ID tag enriched with recycled wood waste



Top carry handle with recycled wood fibre, except on the cabin



3-point locking closure provides extra security





115722

Spinner 55

	40 x 55 x 20
--	--------------

	34 l
--	------

	2.9 kg
--	--------



115723

Spinner 69

	49 x 69 x 29
--	--------------

	79 l
--	------

	4.2 kg
--	--------



115724

Spinner 75

	52 x 75 x 31
--	--------------

	102 l
--	-------

	4.6 kg
--	--------



115725

Spinner 81

	55 x 81 x 35
--	--------------

	138 l
--	-------

	5.0 kg
--	--------



Lightweight, robust and secure 3-point locking. S'Cure is the perfect reliable travel companion.

- Made in Europe
- Lightweight and robust Polypropylene
- 3-point locking for extra security
- Seal to limit moisture penetration
- Practical interior including covered cross ribbons, zipped divider pad and large side pocket



Silver
1776



Dark Blue
1247



Crimson Red
1235



Black
1041



Aqua Blue
1012



NEW

Lime
1515



NEW

Petrol Blue
1686

LIMITED
5
year
WARRANTY



Made with
flowlite®



Secure 3-point locking closure providing extra security



Double tube pull handle and double wheels for optimal comfort



Seal to limit moisture penetration





49539

Spinner 55

	40 x 55 x 20
	34 l
	2.9 kg



49307

Spinner 69

	49 x 69 x 29
	79 l
	4.2 kg



49308

Spinner 75

	52 x 75 x 31
	102 l
	4.6 kg



59244

Spinner 81

	55 x 81 x 35
	138 l
	5.0 kg



SPECTROLITE 3.0 TRVL

D'LITE

RESPARK

VAYCAY

LITEBEAM

56

58

60

NEW

64

NEW

66



SPECTROLITE 3.0 TRVL™

B670

Spectrolite 3.0 TRVL gives the answer to the new generation of business travel. The collection brings durability and security to the highest level, while meeting all needs of frequent business travellers.

- Modern, tech-inspired design, in perfect match with Spectrolite 3.0 Business bags
- Smart business organisation on all cabins, including USB A & C port, powerbank pouch and laptop/tablet sleeve
- Integrated TSA cable lock and secure double coil zipper on main compartment
- Compressible floating divider, including shoe, wet and zipped pocket, ensuring a comfortable packing experience

MATCHES

SPECTROLITE 3.0 P. 96



Black
1041



Deep Blue
1277



RECYCLEX™

Durable suspension wheels



Expandability



Smart business organisation





Samsonite Spectro...



Selection

SOFTSIDE



137350

Garment Sleeve

54 x 54/105 x 5

0.01 l

0.94 kg



137340

Upright 55 EXP

40 x 55 x 23/27

41.5/47 l

2.8 kg

26.7 cm/10.5" -
26.6 x 18.3 x 1.5 cm

39.6 cm/15.6" -
37.5 x 25.9 x 2.8 cm



137342

Spinner 55

40 x 55 x 20

40 l

2.6 kg

26.7 cm/10.5" -
26.6 x 18.3 x 1.5 cm

39.6 cm/15.6" -
37.5 x 25.9 x 2.8 cm



137344

Spinner 55 EXP DF

40 x 55 x 23/27

40/47 l

3.0 kg

26.7 cm/10.5" -
26.6 x 18.3 x 1.5 cm

39.6 cm/15.6" -
37.5 x 25.9 x 2.8 cm



137346

Spinner 68 EXP

44 x 68 x 28/32

80/87 l

3.4 kg

26.7 cm/10.5" -
26.6 x 18.3 x 1.5 cm

39.6 cm/15.6" -
37.5 x 25.9 x 2.8 cm



137347

Spinner 78 EXP

49 x 78 x 31/35

112/121 l

3.9 kg

26.7 cm/10.5" -
26.6 x 18.3 x 1.5 cm

39.6 cm/15.6" -
37.5 x 25.9 x 2.8 cm



Lightweight and designed for the finest comfort-on-the go, enlighten yourself with our D'Lite collection.

- A true lightweight icon at 1.9 kg for the Spinner 55 cm, featuring a laptop sleeve 15.6" and removable wet pouch on all cabins
- Providing the greatest comfort with its renowned bridge top handle, suspension wheels and vertical webbing interior straps
- Various range of check-in sizes including expandability, to answer your individual packing needs
- Broad and elegant colour palette matching perfectly with the C-Lite collection



Black
1041



Midnight Blue
1549



Chili Red
1198



Climbing Ivy
9199



NEW

Fuchsia
1347



recycleX™



Easy-access U-shape pocket & laptop sleeve 15.6"



RecycleX™ interior fabric



Durable double suspension wheels





Samsonite D'Lite ...



Selection

SOFTSIDE



137234

Beauty Case

36 x 26 x 19

15 l

0.6 kg

abc



LIMITED 5 year WARRANTY

137229

Spinner 55 EXP

40 x 55 x 22/25

39/44 l

2 kg

39.6 cm/15.6" - 37.5 x 25.9 x 2.8 cm

abc



LIMITED 5 year WARRANTY

139942

Spinner 55

40 x 55 x 20

40 l

1.9 kg

39.6 cm/15.6" - 37.5 x 25.9 x 2.8 cm

abc



137230

Spinner 63 EXP

42 x 63 x 26/29

60/65 l

2.3 kg

abc



LIMITED 5 year WARRANTY

137231

Spinner 71 EXP

46 x 71 x 29/32

85/91 l

2.6 kg

abc



LIMITED 5 year WARRANTY

137232

Spinner 78 EXP

49 x 78 x 31/34

107/118 l

3 kg

abc



LIMITED 5 year WARRANTY

137233

Spinner 83 EXP

54 x 83 x 34/37

145/155 l

3.2 kg

abc

The Respark collection is our sustainable and durable travel solution, designed with a high focus on volume and practicality.

- All-in offer of trusted Duffles, Bags, Cabins and check-in Spinners
- Exterior and interior fabrics made out of post-consumer recycled PET bottles, part of our Recyclax™ Material Technology Initiative
- High packing capacity and expandability on multiple models
- Practical and secure: corner protection, extra high wheel housings, PU back protection and kickplate
- Double suspension wheels on Spinner models



Ozone Black
7416



Midnight Blue
1549



Forest Green
1339



NEW

Sand Storm
A010



RECYCLEX™

MATCHES

RESPARK TOILET KIT P. 186



Chunky 10 mm zipper tapes on check-in models and secure TSA cable lock



C-shape front compartment for quick and flexible packing



Personalisation loop





Samsonite Respar...



Selection

SOFTSIDE



LIMITED 5 year WARRANTY

143311
Upright 45 Underseater

	35 x 45 x 20
	29 l
	1.8 kg
	26.7 cm/10.5" - 26.6 x 18.3 x 1.5 cm
	39.6 cm/15.6" - 37.5 x 25.9 x 2.8 cm

TSA 36h

abc



LIMITED 5 year WARRANTY

143312
Upright 55 EXP

	40 x 55 x 23/27
	48/57 l
	2.5 kg
	39.6 cm/15.6" - 37.5 x 25.9 x 2.8 cm

TSA 36h

abc



LIMITED 5 year WARRANTY

143325
Spinner 55 EXP Length 35 cm

	35 x 55 x 22/25
	39/44 l
	2.5 kg
	39.6 cm/15.6" - 37.5 x 25.9 x 2.8 cm

TSA 36h

abc



LIMITED 5 year WARRANTY

143328
Spinner 55 Strict

	40 x 55 x 20
	43 l
	2.4 kg
	39.6 cm/15.6" - 37.5 x 25.9 x 2.8 cm

TSA 36h

abc





LIMITED
5
year
WARRANTY

143329

Spinner 55 DF EXP

	40 x 55 x 23/27
	43/49 l
	3 kg
	39.6 cm/15.6" - 37.5 x 25.9 x 2.8 cm



abc





LIMITED
5
year
WARRANTY

143330

Spinner 67 EXP

	43 x 67 x 29/33
	82/92 l
	3.2 kg



abc





LIMITED
5
year
WARRANTY

143331

Spinner 79 EXP

	48 x 79 x 31/35
	124/140 l
	3.6 kg



abc





LIMITED
5
year
WARRANTY

143332

Spinner 82 EXP

	53 x 82 x 34/38
	156/170 l
	4 kg



abc



143333

Garment Bag Tri-Fold

57 x 36 x 17

62 l

1.7 kg



143334

Laptop Shoulder Bag

45 x 33 x 14

24 l

0.7 kg

39.6 cm/15.6" - 37.5 x 25.9 x 2.8 cm



143335

Duffle 48 Overnighter

48 x 35 x 24

36.5 l

0.7 kg



143336

Duffle 55 Twonighter

55 x 33 x 30

54 l

0.7 kg



Modern, effortless and ready-to-go. Vaycay is designed for those who appreciate sleek design, quality and convenience at a great price. The wide range of suitcases and bags are perfect for every journey.

- Front pockets allowing you to tuck-away last-minute belongings and small accessories
- Expandability available on most models
- All pockets are lockable, with an integrated TSA008 lock with kissing sliding pullers on the suitcases
- Secure corner protection on the suitcases
- Practical packing thanks to packing straps, pockets and details colour matching with the exterior
- Interior fabrics made from post-consumer recycled PET bottles, part of our Recyclex™ Material Technology Initiative



Black
1041



Pistachio Green
0588



Navy Blue
1598



Golden Yellow
1371



Lavender
1491



RECYCLEX™



Smooth-rolling, silent double wheels



Smart sleeve and shoulder strap included on the Duffle



Personalisation loop





145454
Toilet Kit



	26 x 18 x 12
	5 l
	0.2 kg



145453
Duffle 53



	53 x 28 x 31
	54 l
	0.8 kg



145446
**Spinner 55 EXP
Length 35 cm**



	35 x 55 x 22/25
	36/41 l
	2.0 kg



145450
Spinner 55 DF EXP



	40 x 55 x 23/26
	42/48 l
	2.4 kg



145449
**Spinner 55
Length 40 cm**



	40 x 55 x 20
	40 l
	2.0 kg



145451
Spinner 66 EXP



	43 x 66 x 27/30
	68/74 l
	2.6 kg



145452
Spinner 77 EXP



	47 x 77 x 29/32
	104/112 l
	3.1 kg

Meet Litebeam, our lightest collection to date. Its modern design, lightweight yet durable construction and practical features will change your travel mindset. Allowing you to move around easily, enjoying every step of the way.

- Our lightest softside: only 1.8 kg for the Spinner 55
- Broad cabin offer, including Underseater, Spinner and Upright
- High-volume capacity and expandability on check-in sizes
- All pockets are lockable and an integrated TSA008 lock with kissing sliding pullers
- Practical packing thanks to packing straps, pockets and details colour matching with the exterior
- Interior fabrics made from post-consumer recycled PET bottles, part of our Recyclex™ Material Technology Initiative



Black
1041



Midnight Blue
1549



Climbing Ivy
9199



Ocean Blue
1621



Tangerine Orange
7976

LIMITED
5 year
WARRANTY



RECYCLEX™



Smooth-rolling, silent double wheels



Smart sleeve on the Underseater



Personalisation loop





146850
Upright 45 Underseater

	35 x 45 x 20
	26 l
	1.6 kg



146851
Upright 55

	40 x 55 x 20
	39 l
	1.7 kg



146852
Spinner 55

	40 x 55 x 20
	39 l
	1.8 kg



146853
Spinner 66 EXP

	43 x 66 x 26/29
	67/73 l
	2.4 kg



146854
Spinner 77 EXP

	47 x 77 x 28/31
	103/111 l
	2.8 kg

AIREA
BASE BOOST
CITYBEAT

70
72
74



Whether you are travelling by airplane, train or car, Airera sets the new standard for travelling light and fashionable.

- Elegant and young design inspired by the built-on pocket trend as seen in fashion
- Lightweight and broad cabin offer as of 1.80 kg for the Spinner 55



Black
1041



Dark Blue
1247



NEW

Sand Storm
A010



NEW

Hibiscus Red
A011



Recessed double wheels providing extra capacity



Bespoke material combination with shiny black metal detailing



Hidden expandability on check-in sizes for extra packing capacity





Samsonite trave...



SOFTSIDE



133627

Beauty Case



	35 x 21 x 19	
	13 l	
	0.4 kg	



137151

Toilet Kit



	29 x 17 x 14
	7.5 l
	0.3 kg



137153

Duffle 45



	45 x 26 x 26	
	36 l	
	0.6 kg	



133621

Upright 55 EXP Top Pocket



	40 x 55 x 20/23		
	41/46 l		
	2.0 kg		



133622

Spinner 55 EXP Length 35 cm



	35 x 55 x 22/25		
	38/43.5 l		
	2.1 kg		



133623

Spinner 55 Strict



	40 x 55 x 20		
	41 l		
	1.8 kg		



133625

Spinner 67 EXP



	43 x 67 x 26/30		
	73.5/81.5 l		
	2.7 kg		



133626

Spinner 78 EXP



	49 x 78 x 29/33		
	111.5/120 l		
	2.8 kg		

BASE BOOST™

7104

Base Boost: a range close to the budget-conscious traveller's heart.

- Characterized by core values such as quality, protection and lightness
- Trendy, modern look thanks to the playful take on the dip-dye trend within the same colour hues



Black
1041



Navy Blue
1598



LIMITED
5
year
WARRANTY



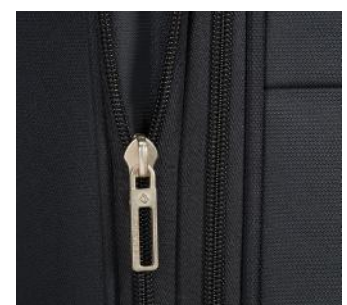
TSA lock on all sizes for secure and stress-free travel



Eye for detail: distinctive logo, pullers and pleat caps



Expandability feature on check-in sizes





79195

Upright 55
Length 40 cm

	40 x 55 x 20
--	--------------

	41 l
--	------

	2.0 kg
--	--------



79200

Spinner 55

	40 x 55 x 20
--	--------------

	39 l
--	------

	2.0 kg
--	--------



79201

Spinner 66 EXP

	44 x 66 x 28/31
--	-----------------

	67.5/73.5 l
--	-------------

	2.7 kg
--	--------



79202

Spinner 78 EXP

	48 x 78 x 31/34
--	-----------------

	105/112.5 l
--	-------------

	3.1 kg
--	--------



Inspired by the beats of the dynamic city life, Citybeat is designed for everyone who appreciates simplicity, performance and all-in-one style at a great price.

- Its overall contemporary design, along with the webbing logo strap and metal detailing help it stand out on the conveyor belt
- Broad and lightweight assortment starting at 2 kg for the Spinner 55



Black
1041



Navy Blue
1598



Red
1726



NEW

Golden Yellow
1371



NEW

Petrol Blue
1686



LIMITED
5
year
WARRANTY



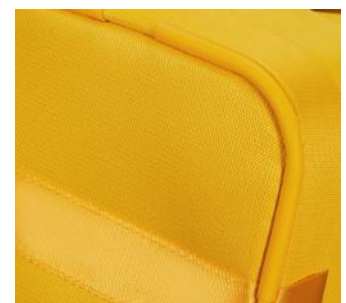
Eye for detail: webbing logo strap and pleat caps



TSA lock on all sizes for secure and stress-free travel



Secure corner protection on all items





128828
Upright 55

40 x 55 x 20

42 l

2 kg



128829
**Spinner 55
Length 35 cm**

35 x 55 x 20

35 l

2 kg



128830
**Spinner 55
Length 40 cm**

40 x 55 x 20

42 l

2 kg

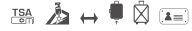


128831
Spinner 66 EXP

42 x 66 x 28/31

67/73 l

2.7 kg



128832
Spinner 78 EXP

47 x 78 x 30/33

105/113 l

3.1 kg



**ECODIVER
ROADER**

**78
82**



Selection

CASUAL
CASUAL
CASUAL
CASUAL
CASUAL
CASUAL
CASUAL
CASUAL
CASUAL
CASUAL
CASUAL
CASUAL
CASUAL
CASUAL
CASUAL

Made to accommodate the new ways of travelling, Ecodiver combines practicality with a stylish design, made from sustainable water-resistant coated fabrics. The collection is developed with special attention to sustainability, security and comfort. With its all-in assortment, including daypacks and travel items, Ecodiver will guide you through the city and long-haul trips.



Black
1041



Blue Nights
2165



Yellow
1924



Climbing Ivy
9199



NEW

Petrol Blue/Lime
A012

- Iconic multihandles design - including top, bottom side and two front handles
- Eco fabrics made from recycled PET, part of our Recyclex™ Material Technology Initiative
- Safe & secure: reflective logo on all items & TSA lock for the wheeled items
- Full travel comfort: ergonomic double wheel tube and an additional C-shape packing compartment in the front



recyclex™



Water-resistant material



Personalisation loop & compression straps*



Reflective details to improve visibility





Samsonite Ecodiv...



Selection

CASUAL



140879

Belt Bag



	35 x 16 x 10
	3 l
	0.2 kg



140878

Toilet Kit



	26 x 16 x 13
	4.5 l
	0.2 kg



140809

Laptop Backpack S



	33 x 44 x 16
	16 l
	0.7 kg
	35.6 cm/14" - 34 x 24 x 2.4 cm



140871

Laptop Backpack M



	32 x 45 x 20
	19 l
	0.9 kg
	26.7 cm/10.5" - 26.6 x 18.3 x 1.5 cm
	39.6 cm/15.6" - 37.5 x 25.9 x 2.8 cm



140872

Laptop Backpack L



	35 x 48 x 23
	26 l
	1.0 kg
	26.7 cm/10.5" - 26.6 x 18.3 x 1.5 cm
	43.9 cm/17.3" - 37.5 x 25.9 x 2.8 cm



140874

Urban Laptop Backpack M USB



	31 x 44 x 20
	18 l
	0.8 kg
	26.7 cm/10.5" - 26.6 x 18.3 x 1.5 cm
	39.6 cm/15.6" - 37.5 x 25.9 x 2.8 cm



140880

Duffel/WH 55

40 x 55 x 20

48 l

2.3 kg

TSA abc



140881

Duffel/WH 55 L 35CM DF

35 x 55 x 23

40 l

2.4 kg

39.6 cm/15.6" - 37.5 x 25.9 x 2.8 cm

TSA abc



140882

Duffel/WH 55 Backpack

40 x 55 x 25

51 l

2.5 kg

TSA abc



140883

Duffel/WH 67

43 x 67 x 28

76 l

2.8 kg

TSA abc



140884

Duffel/WH 79

44 x 79 x 31

122 l

3.2 kg

TSA abc



140885

Spinner Duffel 55

40 x 55 x 23

50 l

2.6 kg

TSA abc



Selection

CASUAL



140886
Spinner Duffel 79
 47 x 79 x 32
 117 l
 3.6 kg
 abc



140875
Duffel S
 55 x 24 x 31
 40 l
 1.0 kg
 abc



140876
Duffel M
 63 x 29 x 35
 60 l
 1.3 kg
 abc



140877
Duffel L
 69 x 36 x 37
 90 l
 1.5 kg
 abc



142896
Travel Backpack S 38L
 34 x 54 x 26
 38 l
 1.6 kg
 26.7 cm/10.5" - 26.6 x 18.3 x 1.5 cm
 43.9cm/17.3" - 42.2 x 28.7 x 3.3cm

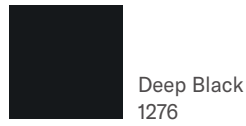


142897
Travel Backpack M 55L
 34 x 61 x 29
 55 l
 1.9 kg
 26.7 cm/10.5" - 26.6 x 18.3 x 1.5 cm
 43.9cm/17.3" - 42.2 x 28.7 x 3.3cm

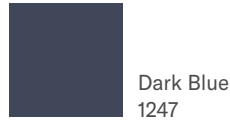


Sleek, versatile and colourful are the key words to describe our latest urban casual collection. Get ready for Roader, our go-to collection for commuting and adventures abroad!

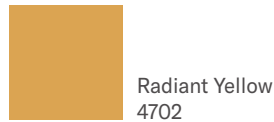
- Secure TSA lock on all wheeled items
- With compression straps to adjust the volume and laptop sleeve 15.6"
- 3 well featured backpacks, including: laptop 15.6", tablet 10.1" sleeve, water bottle pocket, rain cover, paper sleeve, compression straps, pen holder, etc.
- Exterior fabric and interior lining made from recycled PET bottles, part of our Recyclex™ Material Technology Initiative



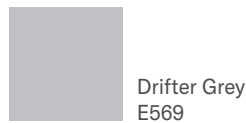
Deep Black
1276



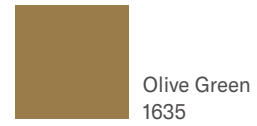
Dark Blue
1247



Radiant Yellow
4702



Drifter Grey
E569



Olive Green
1635



NEW
Deep Blue
1277



NEW
Tangerine Orange
7976



Compression straps*



Personalisation loop



Front pocket laptop sleeve*





Selection

CASUAL



143263

Belt Bag



	31 x 12 x 10
	3 l
	0.2 kg



143264

Laptop Backpack S



	30 x 42 x 19
	17 l
	0.6 kg
	26.7 cm/10.5" - 26.6 x 18.3 x 1.5 cm
	35.6 cm/14" - 34 x 24 x 2.4 cm
	abc



143265

Laptop Backpack M



	33 x 44 x 23
	24 l
	0.8 kg
	26.7 cm/10.5" - 26.6 x 18.3 x 1.5 cm
	39.6 cm/15.6" - 37.5 x 25.9 x 2.8 cm
	abc



143266

Laptop Backpack L EXP



	35 x 46 x 22/26
	31.5/39.5 l
	1.1 kg
	26.7 cm/10.5" - 26.6 x 18.3 x 1.5 cm
	43.9 cm/17.3" - 42.2 x 28.7 x 3.8 cm
	abc



143267

Laptop BP/WH 55



	39 x 55 x 22
	28 l
	2.3 kg
	26.7 cm/10.5" - 26.6 x 18.3 x 1.5 cm
	43.9 cm/17.3" - 42.2 x 28.7 x 3.8 cm
	abc



144244
Duffle XS

	40 x 25 x 20
	20 l
	0.3 kg



143268
Duffle S

	53 x 32 x 34
	55.5 l
	0.6 kg



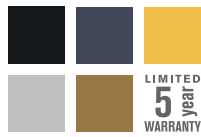
143269
Duffle/WH 55 L 35

	35 x 55 x 23
	39.5 l
	2.2 kg
	26.7 cm/10.5" - 26.6 x 18.3 x 1.5 cm
	39.6 cm/15.6" - 37.5 x 25.9 x 2.8 cm



143271
Duffle/WH 68

	41 x 68 x 30
	81 l
	2.8 kg



143273

Duffle/WH 79

	45 x 79 x 32
	112 l
	3.1 kg



143274

Travel Backpack S 38L

	33 x 57 x 26
	38 l
	1.4 kg
	26.7 cm/10.5" - 26.6 x 18.3 x 1.5 cm
	43.9 cm/17.3" - 42.2 x 28.7 x 3.8 cm



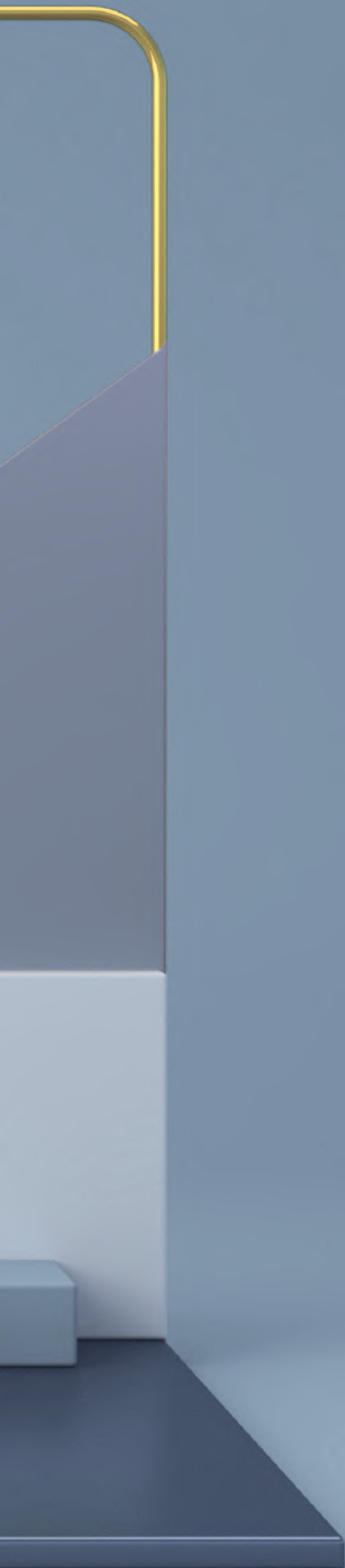
143275

Travel Backpack M 55L

	36 x 61 x 28
	55 l
	1.5 kg
	26.7 cm/10.5" - 26.6 x 18.3 x 1.5 cm
	43.9 cm/17.3" - 42.2 x 28.7 x 3.8 cm







CASUAL
CASUAL
CASUAL
CASUAL
CASUAL
CASUAL
CASUAL
CASUAL
CASUAL
CASUAL
CASUAL
CASUAL
CASUAL
CASUAL
CASUAL

Meet Midtown, our urban lifestyle collection, made to cater for all your packing needs and take you through the city from dawn till dusk.

- Lightweight double frame compartment duffles on wheels
- Exterior partially made from recycled PET, part of our Recyclex™ Material Technology Initiative
- Pack your way with the split frame opening and additional front access via the U-shape opening to the main compartment
- Stay secure with the TSA cable lock on all wheeled items



Black
1041



Dark Blue
1247



Camo Grey
L403



recyclex™



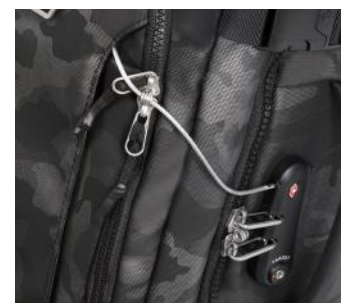
Practical multiple-handle design, making handling easier



Recyclex™ and water repellent PU coated material combination



TSA cable lock to securely close all pockets





Samsonite trav...



CASUAL



133800
Laptop Backpack S

	30 x 41 x 19
	19 l
	0.5 kg
	26.7 cm/10.5" - 26.6 x 18.3 x 1.5 cm
	35.6 cm/14" - 34 x 24 x 2.4 cm



133803
Laptop Backpack M

	30 x 45 x 21
	23 l
	0.7 kg
	26.7 cm/10.5" - 26.6 x 18.3 x 1.5 cm
	39.6 cm/15.6" - 37.5 x 25.9 x 2.8 cm



133805
Laptop Backpack L EXP

	31 x 45 x 23/25.5
	29/32 l
	0.9 kg
	26.7 cm/10.5" - 26.6 x 18.3 x 1.5 cm
	39.6 cm/15.6" - 37.5 x 25.9 x 2.8 cm



133849
Duffel/WH 55 Backpack

	40 x 55 x 23
	43 l
	2.6 kg
	26.7 cm/10.5" - 26.6 x 18.3 x 1.5 cm
	39.6 cm/15.6" - 37.5 x 25.9 x 2.8 cm



133850
Duffel/WH 79

	43 x 79 x 30
	103 l
	3.1 kg



PRO-DLX 6	NEW	92
SPECTROLITE 3.0		96
BIZ2GO		98
XBR 2.0	NEW	100
SECURIPAK		102
SECURIPAK S		104



Selection

BUSINESS
& BAGS

BUSINESS
& BAGS

BUSINESS
& BAGS

**BUSINESS
& BAGS**

BUSINESS
& BAGS

BUSINESS
& BAGS

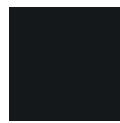
BUSINESS
& BAGS

BUSINESS
& BAGS

A well-awaited facelift, coming in the assortment to revolutionise the concept of heritage backpack.

PRO-DLX 6 will be a step forward from its predecessor PRO-DLX 5 as the DNA will remain but the look will be refreshed in order to become modern and aligned with trends. The line offers a wide assortment focused on core models and linked with upcoming trends.

- Recycled PET lining and ballistic Nylon
- Simplified organisation and updated laptop compartment
- Softer construction, contemporary shape following the market trends



Black
1041



Blue
1090



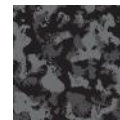
Green
1388



Red
1726



Framed
A123



Camouflage
2207

MATCHES

PRO-DLX 6 SLG P. 194



2 doors usb (A+C)



New logo



Leather touchpoint





147143

Crossover S 7.9"



	15.5 x 22 x 6
	2 l
	0.2 kg
	20.3 cm/8" - 21.6 x 13.5 x 1.4 cm



147144

Crossover M 9.7"



	18.5 x 24 x 8.5
	4 l
	0.3 kg
	24.5 cm/9.7" - 24 x 17 x 1.3 cm



147141

Bailhandle 15.6" EXP



	42 x 30.5 x 15/21
	16/23 l
	1.4 kg
	26.7 cm/10.5" - 26.6 x 18.3 x 1.5 cm
	39.6 cm/15.6" - 37.5 x 25.9 x 2.8 cm



147142

Bailhandle 17.3" EXP



	46 x 33 x 17.5/23.5
	24.5/31 l
	1.5 kg
	26.7 cm/10.5" - 26.6 x 18.3 x 1.5 cm
	43.9 cm/17.3" - 42.2 x 28.7 x 3.8 cm



147139

Backpack 14.1"



	28 x 41 x 14
	12.5 l
	1.1 kg
	26.7 cm/10.5" - 26.6 x 18.3 x 1.5 cm
	35.6 cm/14" - 34 x 24 x 2.4 cm



147140

Backpack 15.6"



	32 x 42 x 15
	15 l
	1.2 kg
	26.7 cm/10.5" - 26.6 x 18.3 x 1.5 cm
	39.6 cm/15.6" - 37.5 x 25.9 x 2.8 cm



147137

Backpack 3V 15.6" EXP



	30 x 43 x 15/21
	21/26 l
	1.3 kg
	26.7 cm/10.5" - 26.6 x 18.3 x 1.5 cm
	39.6 cm/15.6" - 37.5 x 25.9 x 2.8 cm



147138

Backpack 3V 17.3" EXP



	32 x 46 x 18/24
	24.5/33 l
	1.5 kg
	26.7 cm/10.5" - 26.6 x 18.3 x 1.5 cm
	43.9 cm/17.3" - 42.2 x 28.7 x 3.8 cm



148163

Laptop Backpack/WH 17.3"



	34 x 50 x 20
	25 l
	Est. 2.6 kg
	26.7 cm/10.5" - 26.6 x 18.3 x 1.5 cm
	43.9 cm/17.3" - 42.2 x 28.7 x 3.8 cm



147145
Tri-Fold Garment Bag

55 x 40 x 20

Est. 1.8 kg



148137
Upright 55 EXP



40 x 55 x 23/28

38.5/44 l

Est. 3.0 kg

26.7 cm/10.5" -
26.6 x 18.3 x 1.5 cm

39.6 cm/15.6" -
37.5 x 25.9 x 2.8 cm



148162
Rolling Tote 15.6"



46 x 36 x 20

20.5 l

Est. 3.1 kg

26.7 cm/10.5" -
26.6 x 18.3 x 1.5 cm

39.6 cm/15.6" -
37.5 x 25.9 x 2.8 cm



148138
Spinner Tote 15.6"



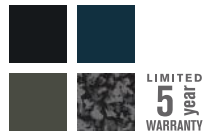
43 x 40 x 20

25 l

Est. 3.2 kg

26.7 cm/10.5" -
26.6 x 18.3 x 1.5 cm

39.6 cm/15.6" -
37.5 x 25.9 x 2.8 cm



148135
Spinner 55 EXP



40 x 55 x 23/28

41/51 l

Est. 3.2 kg

26.7 cm/10.5" -
26.6 x 18.3 x 1.5 cm

39.6 cm/15.6" -
37.5 x 25.9 x 2.8 cm



148136
Spinner 55 Strict



40 x 55 x 20

37 l

Est. 2.8 kg

26.7 cm/10.5" -
26.6 x 18.3 x 1.5 cm

39.6 cm/15.6" -
37.5 x 25.9 x 2.8 cm



SPECTROLITE 3.0™

B656

With refreshed design and organisation, this line is the benchmark of perfect business companion.

- Organised to improve accessibility and capacity
- Interior lining made from recycled PET bottles, part of our Recyclex™ Material Technology Initiative
- Hygienic removable pouch to safely store your surgery masks (*selected assortment)

MATCHES

SPECTROLITE 3.0 TRVL P. 56



Black
1041



Deep Blue
1277



RECYCLEX™



USB port to charge devices
(powerbank sold separately)



Hidden shoulder strap pocket



Water resistant laptop
compartment





Samsonite Spec...



Selection

BUSINESS & BAGS

SMART SLEEVE
WITH HIDDEN POCKET



137267

Tablet Crossover S 7.9"

	15.5 x 22 x 5
	2 l
	0.3 kg
	20.3 cm/8" - 21.6 x 13.5 x 1.4 cm



137263

Bailhandle 15.6" EXP

	42 x 32 x 13/21
	18/22 l
	1.4 kg
	26.7 cm/10.5" - 26.6 x 18.3 x 1.5 cm
	39.6 cm/15.6" - 37.5 x 25.9 x 2.8 cm



137258

Laptop Backpack 15.6" EXP*

	30 x 42.5 x 15/23
	23/26.5 l
	1.5 kg
	26.7 cm/10.5" - 26.6 x 18.3 x 1.5 cm
	39.6 cm/15.6" - 37.5 x 25.9 x 2.8 cm



137268

Rolling Tote 17.3" EXP

	39 x 48.5 x 24.5/32.5
	37.5/42.5 l
	3.5 kg
	26.7 cm/10.5" - 26.6 x 18.3 x 1.5 cm
	43.9 cm/17.3" - 42.2 x 28.7 x 3.8 cm



137262

Bailhandle 14.1"

	38 x 27.5 x 11.5
	12 l
	1.1 kg
	26.7 cm/10.5" - 26.6 x 18.3 x 1.5 cm
	35.6 cm/14" - 34 x 24 x 2.4 cm



137256

Laptop Backpack 14.1"*

	28.5 x 41 x 14
	16.5 l
	1.4 kg
	26.7 cm/10.5" - 26.6 x 18.3 x 1.5 cm
	35.6 cm/14" - 34 x 24 x 2.4 cm



137260

Laptop Backpack 17.3" EXP*

	32 x 46 x 16/24
	26.5/30.5 l
	1.6 kg
	26.7 cm/10.5" - 26.6 x 18.3 x 1.5 cm
	43.9 cm/17.3" - 42.2 x 28.7 x 3.8 cm



Believed to be the best business backpack while commuting on 2 wheels. Biz2Go is the perfect integration of the Samsonite Business DNA in terms of quality and organisation mixed with a modern look and up to date details that improve the comfort, the storable space and look.

- Maximised comfort while carrying
- Exterior fabric and interior lining made from recycled PET bottles, part of our Recyclex™ Material Technology Initiative
- USB port



Black
1041



Deep Blue
1277



Earth Green
1316



Ink blue
1443

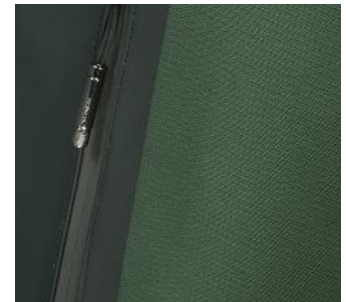


Radiant Yellow
4702



RECYCLEX™

Reflective details to improve visibility



Removable carabiner enriches look and functionality



Ergonomic shock absorbing straps to increase comfort





142140

Waistbag



	39 x 14 x 7.5
	2.5 l
	0.2 kg



142141

Crossover 9.7"



	19 x 24 x 8.5
	4 l
	0.3 kg
	24.5 cm/9.7" - 24 x 17 x 1.3 cm



142142

Laptop Backpack 14.1"



	31 x 43 x 21
	20.5 l
	1 kg
	26.7 cm/10.5" - 26.6 x 18.3 x 1.5 cm
	35.6 cm/14" - 34 x 24 x 2.4 cm



142144

Backpack 15.6" Daytrip



	32 x 43 x 21
	22.5 l
	1.1 kg
	26.7 cm/10.5" - 26.6 x 18.3 x 1.5 cm
	39.6 cm/15.6" - 37.5 x 25.9 x 2.8 cm



142145

Backpack 17.3" EXP Overnight



	33 x 46 x 23/25
	30/35 l
	1.3 kg
	26.7 cm/10.5" - 26.6 x 18.3 x 1.5 cm
	43.9 cm/17.3" - 42.2 x 28.7 x 3.8 cm

The facelift of a symbol of our heritage segment: XBR 2.0 maintains the functionality and premiumness of its predecessor while modernising it to be up to the new generation of businessmen.

- Distinct and functional design with a new squared shape
- Business organisation and separated laptop compartment
- Easy access pocket on a shoulder strap



Black
1041



Blue
1090



Foliage Green
3869



reCYCLEX™

Smart sleeve for ease of transport



Pu details



Refined zipper pullers & modern logo plate





146514

Crossover S 7.9"



	15.5 x 22 x 5.5
--	-----------------

	2 l
--	-----

	0.3 kg
--	--------

	20.3 cm/8" - 21.6 x 13.5 x 1.4 cm
--	--------------------------------------



146512

Bailhandle 2C 15.6"



	40.5 x 30 x 12
--	----------------

	14 l
--	------

	1.2 kg
--	--------

	26.7 cm/10.5" - 26.6 x 18.3 x 1.5 cm
--	---

	39.6 cm/15.6" - 37.5 x 25.9 x 2.8 cm
--	---



146515

Crossover M 9.7"



	18.5 x 24 x 8
--	---------------

	3.5 l
--	-------

	0.4 kg
--	--------

	24.5 cm/9.7" - 24 x 17 x 1.3 cm
--	------------------------------------



146513

Bailhandle 3C 15.6" EXP



	40.5 x 30 x 17/23
--	-------------------

	20/28 l
--	---------

	1.7 kg
--	--------

	26.7 cm/10.5" - 26.6 x 18.3 x 1.5 cm
--	---

	39.6 cm/15.6" - 37.5 x 25.9 x 2.8 cm
--	---



146509

Backpack 14.1"



	28 x 40.5 x 13
--	----------------

	15.5 l
--	--------

	1.0 kg
--	--------

	26.7 cm/10.5" - 26.6 x 18.3 x 1.5 cm
--	---

	35.6 cm/14" - 34 x 24 x 2.4 cm
--	-----------------------------------



146510

Backpack 15.6"



	30 x 43 x 14
--	--------------

	19.5 l
--	--------

	1.2 kg
--	--------

	26.7 cm/10.5" - 26.6 x 18.3 x 1.5 cm
--	---

	39.6 cm/15.6" - 37.5 x 25.9 x 2.8 cm
--	---



146511

Backpack 17.3"



	32 x 46 x 17
--	--------------

	22.5 l
--	--------

	1.5 kg
--	--------

	26.7 cm/10.5" - 26.6 x 18.3 x 1.5 cm
--	---

	43.9 cm/17.3" - 42.2 x 28.7 x 3.8 cm
--	---



The anti-theft collection that mixes comfort of an urban model with several security features.

- Exterior fabric and interior lining made from recycled PET bottles, part of our Recyclex™ Material Technology Initiative
- Cut resistant material layer*
- Reflective details to improve visibility

MATCHES

SECURIPAK S P. 104



Black Steel
T061



Eclipse Blue
7769



True Blue
1875



Cool Grey
2447



Sunset Yellow
1843



Garnet Red
1361



Foliage Green
3869



RECYCLEX™



Hidden pocket with RFID protection*



USB port to charge devices (powerbank sold separately)



Reflective details to improve visibility



reddot winner 2020

*on selected assortment only



Samsonite anti-th...



Selection

BUSINESS & BAGS



128822

Laptop Backpack 15.6"

	30 x 44 x 16			
	17 l			
	0.7 kg			
	26.7 cm/10.5" - 26.6 x 18.3 x 1.5 cm			
	39.6 cm/15.6" - 37.5 x 25.9 x 2.8 cm			



140563

Waistbag



	34.5 x 14 x 5.5	
	1.6 l	
	0.2 kg	



140562

Travel Backpack 15.6" EXP



	31.5 x 42.5 x 14.5/17	
	30 l	
	1 kg	
	26.7 cm/10.5" - 26.6 x 18.3 x 1.5 cm	
	39.6 cm/15.6" - 37.5 x 25.9 x 2.8 cm	



140564

Duffle/WH 55 Lenght 35 cm DF



	35 x 55 x 20	
	39 l	
	2.3 kg	
	26.7 cm/10.5" - 26.6 x 18.3 x 1.5 cm	
	39.6 cm/15.6" - 37.5 x 25.9 x 2.8 cm	

A backpack to be safe anytime! This anti-theft collection mixes a stylish shape with security features.

- Exterior fabric and interior lining made from recycled PET bottles, part of our Recyclex™ Material Technology Initiative
- Cut resistant material layer
- Internal business organisation with zipped pocket
- Hidden side pockets, one of them with RFID
- Protection and a Quick Access pocket

MATCHES

SECURIPAK P. 102



Black Steel
T061



Eclipse Blue
7769



Stone Grey
1830



USB port to charge your devices



Reflective details on frontal panel







RFID pocket to protect your documents





130109

Laptop Backpack 14.1"

	29.5 x 38.5 x 12.5
	10 l
	0.6 kg
	

OPENROAD 2.0		108
VECTURA EVO		110
STACKD BIZ		112
LITEPOINT		114
MYSIGHT		116
DYE-NAMIC	NEW	118
GUARDIT 2.0		120
NETWORK 4		122
SACKSQUARE	NEW	124
SACKMOD	NEW	126
AIRGLOW SLEEVES		129
ZALIA 3.0	NEW	130
OPENROAD CHIC 2.0		132
BE-HER		134
WORKATIONIST		136
ECO WAVE		138
ONGOING		140
GUARDIT CLASSY		142
MOVE 4.0		144





BUSINESS
& BAGS

BUSINESS
& BAGS

BUSINESS
& BAGS

**BUSINESS
& BAGS**

BUSINESS
& BAGS

BUSINESS
& BAGS

BUSINESS
& BAGS

BUSINESS
& BAGS

OPENROAD 2.0™

B660

The evolution into the 2.0 version with tech features, improved organisation but consistent coolness.

- Double side bottle pockets
- Smart Sleeve, which doubles as security pocket (on Backpacks and Bailhandles only)
- A step forward in terms of accessibility and usability



Black
1041



Cool Blue
1971



Metallic logo plate enriches the line with class



USB port to charge devices (battery sold separately)



Water resistant laptop compartment





137211

Waistbag



	39 x 14 x 7.5
	3.5 l
	0.3 kg



137205

Tablet Crossover 7.9"



	15.5 x 22.5 x 7
	2.5 l
	0.3 kg
	20.3 cm/8" - 21.6 x 13.5 x 1.4 cm



137206

Tablet Crossover 9.7"



	19 x 24 x 8.5
	4 l
	0.4 kg
	24.5 cm/9.7" - 24 x 17 x 1.3 cm



137210

Bailhandle 15.6" EXP



	43 x 31 x 13.5/21.5
	20/24 l
	1.4 kg
	26.7 cm/10.5" - 26.6 x 18.3 x 1.5 cm
	39.6 cm/15.6" - 37.5 x 25.9 x 2.8 cm



137207

Laptop Backpack 14.1"



	29 x 41 x 16
	22.5 l
	1.4 kg
	26.7 cm/10.5" - 26.6 x 18.3 x 1.5 cm
	35.6 cm/14" - 34 x 24 x 2.4 cm



137208

Laptop Backpack 15.6"



	31 x 43 x 17
	18 l
	1.3 kg
	26.7 cm/10.5" - 26.6 x 18.3 x 1.5 cm
	39.6 cm/15.6" - 37.5 x 25.9 x 2.8 cm



137209

Laptop Backpack 17.3" + Cloth. Comp



	32 x 46 x 19/27
	29.5//34 l
	1.6 kg
	26.7 cm/10.5" - 26.6 x 18.3 x 1.5 cm
	43.9 cm/17.3" - 42.2 x 28.7 x 3.8 cm

VECTURA EVO™

A202

Essential and smart, featuring a lightweight design and cutting-edge functionality.

- Soft padded touch points, handles and shoulder straps
- Easy Pass™ system which allows to connect devices stored in different compartments
- Smart Sleeve on all models



Black
1041



USB port to charge devices
(powerbank sold separately)



Complete interior organisation



Laptop and tablet compartment





Samsonite B...



TURA EVO
Backpack



123665

Office Case 15.6"



	41 x 30 x 7
	14 l
	0.9 kg
	26.7 cm/10.5" - 26.6 x 18.3 x 1.5 cm
	39.6 cm/15.6" - 37.5 x 25.9 x 2.8 cm



123669

Laptop Bailhandle 14.1"



	37 x 27.5 x 7
	10 l
	0.7 kg
	26.7 cm/10.5" - 26.6 x 18.3 x 1.5 cm
	35.6 cm/14" - 34 x 24 x 2.4 cm



123670

Laptop Bailhandle 15.6"



	41 x 30 x 12
	18 l
	1 kg
	26.7 cm/10.5" - 26.6 x 18.3 x 1.5 cm
	39.6 cm/15.6" - 37.5 x 25.9 x 2.8 cm



123671

Laptop Bailhandle 17.3"



	44 x 32 x 12
	20.5 l
	1.1 kg
	26.7 cm/10.5" - 26.6 x 18.3 x 1.5 cm
	43.9 cm/17.3" - 42.2 x 28.7 x 3.8 cm



123672

Laptop Backpack 14.1"



	29 x 41 x 16
	19 l
	0.9 kg
	26.7 cm/10.5" - 26.6 x 18.3 x 1.5 cm
	35.6 cm/14" - 34 x 24 x 2.4 cm



123673

Laptop Backpack 15.6"



	29 x 44.5 x 18
	22 l
	0.9 kg
	26.7 cm/10.5" - 26.6 x 18.3 x 1.5 cm
	39.6 cm/15.6" - 37.5 x 25.9 x 2.8 cm



123675

Rolling Tote 17.3"



	46 x 35 x 20
	27.5 l
	2.8 kg
	26.7 cm/10.5" - 26.6 x 18.3 x 1.5 cm
	43.9 cm/17.3" - 42.2 x 28.7 x 3.8 cm

LIMITED
5 year
WARRANTY

Born in cross design with the travel line, StackD Biz blink the eye to the modern consumer fitting the emerging trends in terms of look and gender. With the assortment focused on Backpacks, each size has different interpretation in terms of look and functionality.



Black
1041



Navy
1596



Forest
1338



Rose
1751

- Unisex design
- Exterior fabric and interior lining made from recycled PET bottles, part of our Recyclex™ Material Technology Initiative
- USB port

MATCHES

STACKD P. 32 AND STACKD TOILET KIT P. 188



Slim easy access front pocket



Top handle integrated into shoulder straps



Cloth compartment on Laptop Backpack 17.3" EXP





141470

Laptop Backpack 14.1"



	30 x 42.5 x 18
	15 l
	1.0 kg
	26.7 cm/10.5" - 26.6 x 18.3 x 1.5 cm
	35.6 cm/14" - 24 x 24 x 2.4 cm



141471

Laptop Backpack 15.6"



	31.5 x 44 x 18.5
	16.5 l
	1.0 kg
	26.7 cm/10.5" - 26.6 x 18.3 x 1.5 cm
	39.6 cm/15.6" - 37.5 x 25.9 x 2.8 cm



141472

Laptop Backpack 17.3" EXP*



	34 x 47 x 21/25.5
	22/30 l
	1.4 kg
	26.7 cm/10.5" - 26.6 x 18.3 x 1.5 cm
	43.9 cm/17.3" - 42.2 x 28.7 x 3.8 cm



Litepoint is your total mobile workspace into one light Backpack.

- Exterior fabric and interior lining made from recycled PET bottles, part of our Recyclex™ Material Technology Initiative
- Reflective details on the front
- Wide assortment of models



Black
1041



Grey
1408



Peacock
1671



RECYCLEX™



Detailed zipper pullers on reflective zipper



Minimalist approach of the Samsonite logo



Powerbank organisation





WITH ON TOP A WATER RESISTANT LAPTOP COMPARTMENT
LITSPPOINT



134554

Waistbag



	34 x 15.5 x 7.5
	3 l
	0.2 kg



134547

Bailhandle 15.6" EXP



	40.5 x 30 x 13/18
	17.5/22 l
	0.9 kg
	26.7 cm/10.5" - 26.6 x 18.3 x 1.5 cm
	39.6 cm/15.6" - 37.5 x 25.9 x 2.8 cm



134545

Tablet Crossover 9.7"



	20 x 8.5 x 25
	4.5 l
	0.2 kg
	24.5 cm/9.7" - 24 x 17 x 1.3 cm



134548

Laptop Backpack 14.1"



	28.5 x 40.5 x 11
	16 l
	0.8 kg
	26.7 cm/10.5" - 26.6 x 18.3 x 1.5 cm
	35.6 cm/14" - 34 x 24 x 2.4 cm



134549

Laptop Backpack 15.6"



	30 x 43 x 13
	18 l
	0.9 kg
	26.7 cm/10.5" - 26.6 x 18.3 x 1.5 cm
	39.6 cm/15.6" - 37.5 x 25.9 x 2.8 cm



134550

Laptop Backpack 17.3" EXP



	32 x 46 x 18/23
	25/31 l
	2.4 kg
	26.7 cm/10.5" - 26.6 x 18.3 x 1.5 cm
	43.9 cm/17.3" - 42.2 x 28.7 x 3.8 cm



134551

Laptop Backpack/WH 17.3"



	32.5 x 48 x 20
	30 l
	1.3 kg
	26.7 cm/10.5" - 26.6 x 18.3 x 1.5 cm
	43.9 cm/17.3" - 42.2 x 28.7 x 3.8 cm

High-tech & lightweight design with smart organisation, in an eco-friendly body exterior.

- Exterior fabric made from recycled PET bottles, part of our Recyclex™ Material Technology Initiative
- Detachable pen pouch with Velcro fastening
- Smart Sleeve, comfortable padded handles and shoulder straps on all models
- Small colourful details for a modern touch



Black
1041



Blue
1090



USB port on all models



Removable pen pouch



Laptop and tablet compartment





135074

Laptop Bailhandle 14.1"

	38 x 27.5 x 7
	8.5 l
	0.6 kg
	26.7 cm/10.5" - 26.6 x 18.3 x 1.5 cm
	35.6 cm/14" - 34 x 24 x 2.4 cm



135075

Laptop Bailhandle 15.6"

	42 x 30 x 10.5
	12.5 l
	0.7 kg
	26.7 cm/10.5" - 26.6 x 18.3 x 1.5 cm
	39.6 cm/15.6" - 37.5 x 25.9 x 2.8 cm



135070

Laptop Backpack 14.1"

	28 x 40 x 13.5
	16.5 l
	0.9 kg
	26.7 cm/10.5" - 26.6 x 18.3 x 1.5 cm
	35.6 cm/14" - 34 x 24 x 2.4 cm



135071

Laptop Backpack 15.6"

	30 x 43 x 16
	19 l
	0.9 kg
	26.7 cm/10.5" - 26.6 x 18.3 x 1.5 cm
	39.6 cm/15.6" - 37.5 x 25.9 x 2.8 cm



135072

Laptop Backpack 17.3"

	32 x 46 x 17.5
	25.5 l
	1.1 kg
	26.7 cm/10.5" - 26.6 x 18.3 x 1.5 cm
	43.9 cm/17.3" - 42.2 x 28.7 x 3.8 cm



135073

Laptop Backpack/WH 17.3"

	32.5 x 48 x 18.5
	25.5 l
	2.4 kg
	26.7 cm/10.5" - 26.6 x 18.3 x 1.5 cm
	43.9 cm/17.3" - 42.2 x 28.7 x 3.8 cm

Our new line with a stylish and modern design playing with innovative shapes and keeping a genderless feeling. Made of eco materials, organised and functional.

- Rounded shape and soft structure
- Business organisation and separated laptop compartment
- Wide color offer



Black
1041



Blue
1090



Foliage Green
3869



Grape Purple
B102



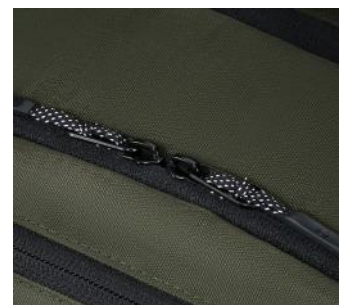
New TPU logo



Clothes compartment on Backpack L 17.3"



Reflective details





146465

Waistbag

	39 x 14 x 7
	3 l
	0.2 kg



146457

Backpack S 14.1"

	26 x 42 x 15
	16 l
	0.6 kg
	26.7 cm/10.5" - 26.6 x 18.3 x 1.5 cm
	35.6 cm/14" - 34 x 24 x 2.4 cm



146459

Backpack M 15.6"

	28 x 45 x 18
	20.5 l
	0.7 kg
	26.7 cm/10.5" - 26.6 x 18.3 x 1.5 cm
	39.6 cm/15.6" - 37.5 x 25.9 x 2.8 cm



146460

Backpack L 17.3"

	31 x 48 x 19.5
	24 l
	0.9 kg
	26.7 cm/10.5" - 26.6 x 18.3 x 1.5 cm
	43.9 cm/17.3" - 42.2 x 28.7 x 3.8 cm



146464

Messenger Bag 14.1"

	38.5 x 30.5 x 11
	15 l
	0.6 kg
	26.7 cm/10.5" - 26.6 x 18.3 x 1.5 cm
	35.6 cm/14" - 34 x 24 x 2.4 cm

The convenience of an everyday laptop-carrying bag, with a sleek and professional look.

- Interesting mix of 2 different Polyester materials
- Service pocket with soft-touch lining for sunglasses, tickets and other small essentials
- Redesigned interior organisation to better suit the latest electronic devices



Black
1041



Blue
1090

MATCHES

GUARDIT CLASSY P. 142



115325

Office Case 15.6"

	40 x 30 x 9
	16 l
	0.7 kg
	26.7 cm/10.5" - 26.6 x 18.3 x 1.5 cm
	39.6 cm/15.6" - 37.5 x 25.9 x 2.8 cm












115326


Bailhandle 13.3"

	34.5 x 24.5 x 8.5
	9.5 l
	0.4 kg
	26.7 cm/10.5" - 26.6 x 18.3 x 1.5 cm
	33.8 cm/ 13.3" - 32.5 x 22.9 x 2 cm



















115327

Bailhandle 15.6"

	40 x 30 x 9
	14.5 l
	0.5 kg
	26.7 cm/10.5" - 26.6 x 18.3 x 1.5 cm
	39.6 cm/15.6" - 37.5 x 25.9 x 2.8 cm

Smart Sleeve in all items





115328
Bailhandle 17.3"

	43 x 32 x 10
	18.5 l
	0.6 kg
	26.7 cm/10.5" - 26.6 x 18.3 x 1.5 cm
	43.9 cm/17.3" - 42.2 x 28.7 x 3.8 cm



115329
Laptop Backpack S 14.1"

	29 x 40 x 18
	17.5 l
	0.7 kg
	26.7 cm/10.5" - 26.6 x 18.3 x 1.5 cm
	35.6 cm/14" - 34 x 24 x 2.4 cm



115330
Laptop Backpack M 15.6"

	30 x 44 x 20
	22.5 l
	0.7 kg
	26.7 cm/10.5" - 26.6 x 18.3 x 1.5 cm
	39.6 cm/15.6" - 37.5 x 25.9 x 2.8 cm



115331
Laptop Backpack L 17.3"

	32 x 48 x 20.5
	27.5 l
	0.8 kg
	26.7 cm/10.5" - 26.6 x 18.3 x 1.5 cm
	43.9 cm/17.3" - 42.2 x 28.7 x 3.8 cm



115333
Laptop Backpack/WH 15.6"

	33.5 x 48 x 20
	29 l
	2.2 kg
	26.7 cm/10.5" - 26.6 x 18.3 x 1.5 cm
	39.6 cm/15.6" - 37.5 x 25.9 x 2.8 cm



115332
Rolling Tote 17.3"

	45 x 33 x 18
	26.5 l
	2.7 kg
	26.7 cm/10.5" - 26.6 x 18.3 x 1.5 cm
	43.9 cm/17.3" - 42.2 x 28.7 x 3.8 cm

LIMITED
5
year
WARRANTY

LIMITED
5
year
WARRANTY

NETWORK 4™

C410

Our iconic Samsonite tech line featuring a modern and minimal look. Functionality, aggressive price point and Eco material make Network 4 a must have.

- Modern design
- Interior and exterior lining made from recycled PET bottles, part of our Recyclax™ Material Technology Initiative
- Lightness to increase the comfort



Charcoal Black
6551



Space Blue
1820



Metallic logo plate enriches the look

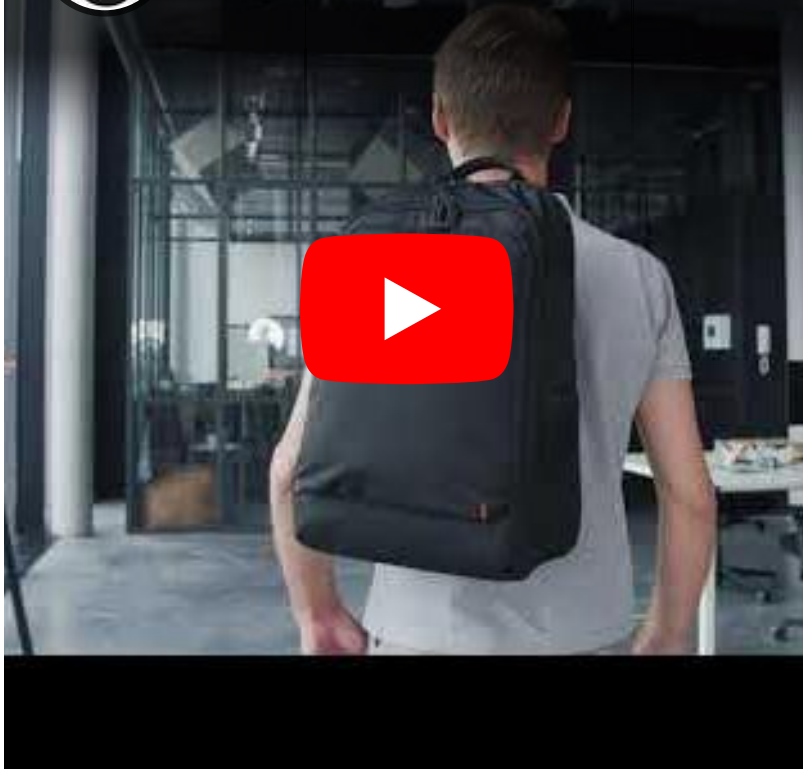


Colour contrast details as distinctive signature



Dedicated laptop and tablet compartment





142306
Bailhandle 14.1"



	35.8 x 28.5 x 10.5
	11 l
	0.7 kg
	26.7 cm/10.5" - 26.6 x 18.3 x 1.5 cm
	35.6 cm/14" - 34 x 24 x 2.4 cm



142307
Bailhandle 15.6"



	42.5 x 30.5 x 11
	15.5 l
	0.7 kg
	26.7 cm/10.5" - 26.6 x 18.3 x 1.5 cm
	39.6 cm/15.6" - 37.5 x 25.9 x 2.8 cm



142309
Laptop Backpack 14.1"



	28 x 40.5 x 19
	5.5 l
	0.7 kg
	26.7 cm/10.5" - 26.6 x 18.3 x 1.5 cm
	35.6 cm/14" - 34 x 24 x 2.4 cm



142310
Laptop Backpack 15.6"



	31 x 43.5 x 19.5
	20.5 l
	0.8 kg
	26.7 cm/10.5" - 26.6 x 18.3 x 1.5 cm
	39.6 cm/15.6" - 37.5 x 25.9 x 2.8 cm



142311
Laptop Backpack 17.3"



	32.5 x 46 x 21
	25 l
	1.0 kg
	26.7 cm/10.5" - 26.6 x 18.3 x 1.5 cm
	43.9 cm/17.3" - 42.2 x 28.7 x 3.8 cm

A facelift for our Hip Line featuring a new and trendy shape: The Slingbag. The line approaches the classical businessman looking for an everyday bag that will also match their looks.

- Recycled PET and Polyurethane body with a squared Samsonite logo
- New Sling design with internal organisation and Clutch design with internal organisation and handle
- Different crossover sizes and designs with internal organisation



Black
1041



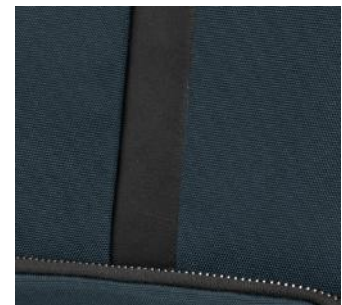
Blue
1090



Water bottle pocket on Slingbag



PU details



New square logo





146477

Waist Bag



	39 x 14 x 7
	2.5 l
	0.2 kg



146474

Crossover S 7.9"



	15.5 x 22 x 4.5
	2 l
	0.3 kg
	20.3 cm/8" - 21.6 x 13.5 x 1.4 cm



146475

Crossover M 9.7"



	19 x 24 x 5.5
	4 l
	0.3 kg
	24.5 cm/9.7" - 24 x 17 x 1.3 cm



146476

Slingbag M



	20 x 37 x 9.5
	4.5 l
	0.4 kg
	26.7 cm/10.5" - 26.6 x 18.3 x 1.5 cm



146478

Travel Clutch



	21.5 x 14 x 4.5
	1.5 l
	0.2 kg

Born in the era of hands-free mobility, the line is characterised by a new concept of waist bags and crossovers for the man always on the go and aiming to reach a younger consumer.

- Recycled PET and metal hardware with new TPU logo
- Different crossover sizes and designs with internal organisation
- New Sling design with internal organisation



Black
1041



Foliage Green
3869



Double access on Slingbag for both right and left-handed



TPU logo



Modern look thanks to the strap details on front





146462
Slingbag M

	20 x 39 x 5.5
	4 l
	0.4 kg
	26.7 cm/10.5" - 26.6 x 18.3 x 1.5 cm



146463
Waist Bag

	27 x 13.5 x 5.5
	2 l
	0.3 kg



146458
Crossover S 7.9"

	15.5 x 22 x 4.5
	2.5 l
	0.3 kg
	20.3 cm/8" - 21.6 x 13.5 x 1.4 cm



146461
Crossover M 9.7"

	19 x 24 x 5.5
	4 l
	0.3 kg
	24.5 cm/9.7" - 24 x 17 x 1.3 cm





Super soft sleeves range offering a convenient way to protect and transport a tablet, netbook or laptop.

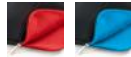
- Outer pockets store smaller valuable items
- Choice of bold accent colours



Black/Red
1073



Black/Blue
2642

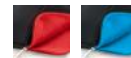


46749

Laptop Sleeve 13.3"



	33.5 x 25 x 5
	2.5 l
	0.3 kg
	33.8 cm/13.3" - 32.5 x 22.9 x 2 cm



78145

Laptop Sleeve New 14.1"



	36 x 26 x 6
	4 l
	0.3 kg
	35.6 cm/14" - 34 x 24 x 2.4 cm



46123

Laptop Sleeve 15.6"



	40 x 30.5 x 5
	4.5 l
	0.4 kg
	39.6 cm/15.6" - 37.5 x 25.9 x 2.8 cm

The 3.0 version, made for the first time with recycled PET bottles, comes with new styles and details. The line is even more elegant and feminine designed to help you commute light and stay organised.

- Exterior fabric and interior lining made from recycled PET bottles, part of our Recyclex™ Material Technology Initiative
- Shiny Nickel finishing hardware
- Business organisation
- Geometrical pullers and handles attachment



Black
1041



Dark Navy
1265



Dark Red
1267



Old Rose
1630



Silver Grey
1802



Laptop and tablet compartment



Inner organisation



Elegant details





147736
Bailhandle 3 Comp 14.1"

	39 x 29 x 12
	14 l
	1.0 kg
	26.7 cm/10.5" - 26.6 x 18.3 x 1.5 cm
	35.6 cm/14" - 34 x 24 x 2.4 cm



147737
Bailhandle 2 Comp 15.6"

	40 x 30 x 10
	14.5 l
	1.0 kg
	26.7 cm/10.5" - 26.6 x 18.3 x 1.5 cm
	39.6 cm/15.6" - 37.5 x 25.9 x 2.8 cm



147733
Backpack 14.1"

	28 x 38.5 x 11
	13 l
	1.0 kg
	26.7 cm/10.5" - 26.6 x 18.3 x 1.5 cm
	35.6 cm/14" - 34 x 24 x 2.4 cm



147734
Backpack 15.6"

	28 x 41 x 12.5
	18 l
	1.1 kg
	26.7 cm/10.5" - 26.6 x 18.3 x 1.5 cm
	39.6 cm/15.6" - 37.5 x 25.9 x 2.8 cm



147735
Backpack W/Flap 14.1"

	28 x 37 x 9
	11.5 l
	1.0 kg
	26.7 cm/10.5" - 26.6 x 18.3 x 1.5 cm
	35.6 cm/14" - 34 x 24 x 2.4 cm



147738
Tote 14.1"

	40 x 30 x 16
	15 l
	0.9 kg
	26.7 cm/10.5" - 26.6 x 18.3 x 1.5 cm
	35.6 cm/14" - 34 x 24 x 2.4 cm

OPENROAD CHIC 2.0™

B997

Even more classy and contemporary, the 2.0 version has a new design and feminine details!

An improved organisation plus USB port complete our beloved urban range!

- A step forward in terms of accessibility and usability
- Double side bottle pockets
- Samsonite logo plate



Black
1041



Pearl Lilac
2274



Improved accessibility and top pocket



USB port & water resistant laptop compartment



Feminine logo plate and cool zipper pullers





Samsonite Openroad Chic ...



PRACTICAL FRONT POCKET

BUSINESS & BAGS



139458

Waistbag

	32 x 13.5 x 9
	2 l
	0.2 kg



139457

Slim Bailhandle 15.6"

	41 x 31.5 x 11.5
	11.5 l
	0.9 kg
	26.7 cm/10.5" - 26.6 x 18.3 x 1.5 cm
	39.6 cm/15.6" - 37.5 x 25.9 x 2.8 cm



139459

Backpack 13.3"

	30.5 x 40 x 18.5
	13.5 l
	1.2 kg
	26.7 cm/10.5" - 26.6 x 18.3 x 1.5 cm
	33.8 cm/13.3" - 32.5 x 22.9 x 2 cm



139460

Backpack 14.1"

	32.5 x 44 x 21.5
	19 l
	1.3 kg
	26.7 cm/10.5" - 26.6 x 18.3 x 1.5 cm
	35.6 cm/14" - 34 x 24 x 2.4 cm



The combination of lady's Handbags and business products make Be-Her the perfect item throughout the day. Light and comfortable without forgetting functionality and sustainability.

- Exterior fabric and interior lining made from recycled PET bottles, part of our Recyclex™ Material Technology Initiative
- Distinctive metal plate logo
- Feminine details



Black
1041



Antique Pink
5055



Petrol Grey
6325



RECYCLEX™



144365

Shoulder bag XS



	21 x 14 x 8
	2.5 l
	0.3 kg



144364

Horiz. Shoulder bag M 3 Comp



	28.5 x 19.5 x 12.5
	7 l
	0.4 kg

Side bottle pocket



Internal organisation



Separated laptop compartment





144367
Bucket bag M

	28.5 x 28.5 x 13
	9.5 l
	0.6 kg



144370
Backpack S

	20.5 x 30 x 10.5
	7.5 l
	0.5 kg



144371
Backpack 14.1"

	26.5 x 38 x 10
	14 l
	0.7 kg
	26.7 cm/10.5" - 26.6 x 18.3 x 1.5 cm
	35.6 cm/14" - 34 x 24 x 2.4 cm



144373
Backpack 15.6"

	28 x 40 x 13.5
	18 l
	0.8 kg
	26.7 cm/10.5" - 26.6 x 18.3 x 1.5 cm
	39.6 cm/15.6" - 37.5 x 25.9 x 2.8 cm



144375
Tote 15.6"

	39 x 29 x 14
	15 l
	0.9 kg
	26.7 cm/10.5" - 26.6 x 18.3 x 1.5 cm
	39.6 cm/15.6" - 37.5 x 25.9 x 2.8 cm



144378
Shopping bag 14.1"

	38 x 29 x 14
	14 l
	0.8 kg
	26.7 cm/10.5" - 26.6 x 18.3 x 1.5 cm
	35.6 cm/14" - 34 x 24 x 2.4 cm

Explore new horizons and enjoy your vacation even if you are working: Workationist will be your loyal ally with its comfort and functional features in a urban & minimalistic Backpack!

- Exterior fabric and interior lining made from recycled PET bottles, part of our Recyclex™ Material Technology Initiative
- Water resistant laptop compartment & USB port
- Quick access pockets, one water resistant with PEVA lining



Black
1041



Blueberry
1120



Quartz
1721



Dedicated charm



Refined zipper pullers & feminine logo plate



New way for icons





142613
Shoulder bag + flap*



	28 x 19 x 10
	4.5 l
	0.4 kg



142615
Tote 13.3''*



	34 x 25 x 14
	12 l
	0.9 kg
	26.7 cm/10.5" - 26.6 x 18.3 x 1.5 cm
	33.8 cm/13.3" - 32.5 x 22.9 x 2 cm



142616
Tote 14.1''



	38 x 29 x 14
	17 l
	0.9 kg
	26.7 cm/10.5" - 26.6 x 18.3 x 1.5 cm
	35.6 cm/14" - 34 x 24 x 2.4 cm



142617
Bailhandle 15.6''



	40 x 29 x 9.5
	12 l
	0.9 kg
	26.7 cm/10.5" - 26.6 x 18.3 x 1.5 cm
	39.6 cm/15.6" - 37.5 x 25.9 x 2.8 cm



142619
Backpack 14.1''



	26 x 40 x 14.5
	14 l
	0.9 kg
	26.7 cm/10.5" - 26.6 x 18.3 x 1.5 cm
	35.6 cm/14" - 34 x 24 x 2.4 cm



142620
Backpack 15.6'' + CL. COMP



	28 x 43 x 16.5
	17.5 l
	1.2 kg
	26.7 cm/10.5" - 26.6 x 18.3 x 1.5 cm
	39.6 cm/15.6" - 37.5 x 25.9 x 2.8 cm

A light, comfortable and eco line that combines a contemporary and minimalist design.

- Exterior fabric made from recycled PET bottles, part of our Recyclax™ Material Technology Initiative
- Shiny Nickel hardware
- Business organisation
- Samsonite logo embossed on metal plate



Black
1041



Midnight Blue
1549



Stone Grey
1830



Separated laptop compartment



Quick Access pocket



Smart Sleeve to stack your bag on your suitcase





130662
Bailhandle 15.6"

	39 x 29 x 7
	10 l
	0.5 kg
	26.7 cm/10.5" - 26.6 x 18.3 x 1.5 cm
	39.6 cm/15.6" - 37.5 x 25.9 x 2.8 cm



130663
Bailhandle 15.6" 2 Comp

	39 x 29 x 11
	15.5 l
	0.7 kg
	26.7 cm/10.5" - 26.6 x 18.3 x 1.5 cm
	39.6 cm/15.6" - 37.5 x 25.9 x 2.8 cm



130664
Backpack 14.1"

	29 x 40 x 7
	12.5 l
	0.6 kg
	26.7 cm/10.5" - 26.6 x 18.3 x 1.5 cm
	35.6 cm/14" - 34 x 24 x 2.4 cm



130666
Backpack 15.6"

	33 x 43 x 15
	19 l
	0.8 kg
	26.7 cm/10.5" - 26.6 x 18.3 x 1.5 cm
	39.6 cm/15.6" - 37.5 x 25.9 x 2.8 cm



The perfect balance of simplicity and attention to details. Linear shapes, sober look and eco materials are the winning elements of Ongoing, suitable for everyday adventures while commuting to work.

- Interior lining made from recycled PET bottles, part of our Recyclex™ Material Technology Initiative
- The exterior fabric is made out of recycled nylon coming from post-industrial waste
- Quick access pockets
- Samsonite printed logo



Black
1041



Olive Green
1635



Petrol Grey
6325



Light Plum
7819



RECYCLEX™

Side bottle pocket

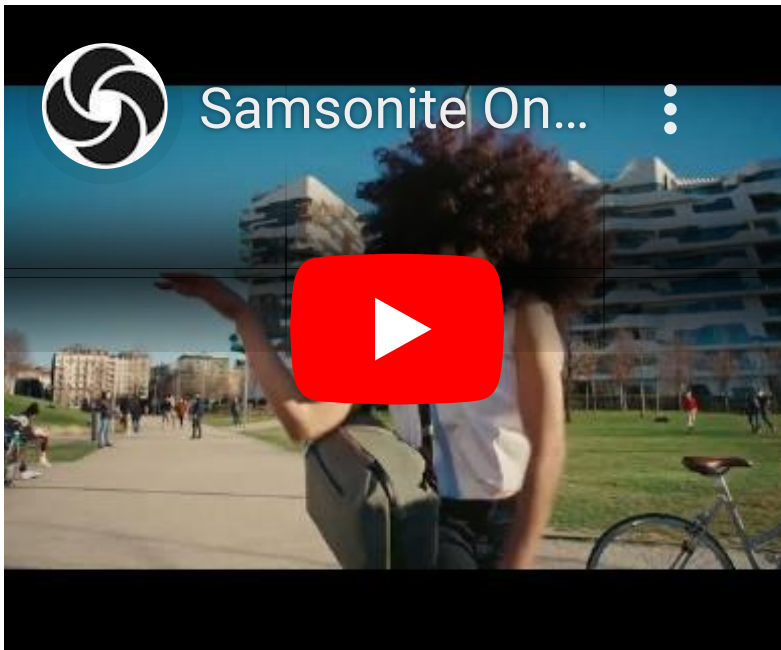


Separated laptop compartment



Top pocket





144759
Daily Backpack

	25 x 35 x 15
	11.5 l
	0.5 kg



144758
Backpack 14.1"

	28 x 37.5 x 14
	14.5 l
	0.7 kg
	26.7 cm/10.5" - 26.6 x 18.3 x 1.5 cm
	35.6 cm/14" - 34 x 24 x 2.4 cm



144760
Backpack 15.6"

	29.5 x 41 x 15
	17 l
	0.8 kg
	26.7 cm/10.5" - 26.6 x 18.3 x 1.5 cm
	39.6 cm/15.6" - 37.5 x 25.9 x 2.8 cm



144761
Bailhandle 15.6"

	40 x 29 x 9
	10.5 l
	0.7 kg
	26.7 cm/10.5" - 26.6 x 18.3 x 1.5 cm
	39.6 cm/15.6" - 37.5 x 25.9 x 2.8 cm



144762
Bailhandle 15.6" 2 comp

	40 x 29 x 13
	15 l
	0.8 kg
	26.7 cm/10.5" - 26.6 x 18.3 x 1.5 cm
	39.6 cm/15.6" - 37.5 x 25.9 x 2.8 cm



144763
Duffle

	45 x 36 x 22
	35.5 l
	0.7 kg



144764
Messenger 13.3"

	36 x 25 x 11.25
	11 l
	0.7 kg
	26.7 cm/10.5" - 26.6 x 18.3 x 1.5 cm
	33.8 cm/13.3" - 32.5 x 22.9 x 2 cm

GUARDIT CLASSY™

B999

If eco materials and minimalistic design are all you care about, this is the perfect line for you!

- Business organisation
- Exterior fabric and interior lining made from recycled PET bottles, part of our Recyclex™ Material Technology Initiative
- Shiny nickel finishing hardware
- Feminine pullers

MATCHES

GUARDIT 2.0 P. 120



Black
1041



Midnight Blue
1549



Stone Grey
1830



Separated laptop compartment



Padded back panel



Internal organisation





Samsonite Guardit Classy - ...



BUSINESS & BAGS



19

FABRIC AND LINING MADE FROM RECYCLED RPET BOTTLES



139467

Bailhandle 15.6"



	40 x 30 x 10
	11.5 l
	0.6 kg
	26.7 cm/10.5" - 26.6 x 18.3 x 1.5 cm
	39.6 cm/15.6" - 37.5 x 25.9 x 2.8 cm



139468

Backpack 14.1"



	29 x 40 x 18
	17.5 l
	0.7 kg
	26.7 cm/10.5" - 26.6 x 18.3 x 1.5 cm
	35.6 cm/14" - 34 x 24 x 2.4 cm



139469

Backpack 15.6"



	33 x 43 x 15
	19 l
	0.8 kg
	26.7 cm/10.5" - 26.6 x 18.3 x 1.5 cm
	39.6 cm/15.6" - 37.5 x 25.9 x 2.8 cm

MOVE 4.0™

C813

The multi-pocket organisation is the best way to keep everything organised. Extremely light, easily foldable and also washable, Move 4.0 is the perfect line to carry with you wherever you want.

- Shiny nickel hardware and puller
- Outside multi-pocket organisation
- Samsonite lettering metal logo with rivets
- Interior lining and zippers made from recycled PET bottles, part of our Recyclex™ Material Technology Initiative



Black
1041



Dark Blue
1247



NEW

Light Taupe
0414



Internal organisation



Samsonite lettering metal logo with rivets



Side pocket





144718
Reporter bag

	28.5 x 21 x 10
	7 l
	0.4 kg



144719
Horizontal Shoulder Bag + Flap

	30 x 20 x 10.5
	5.5 l
	0.4 kg



144720
Shoulder Bag S + 1 Pocket

	27 x 23 x 13
	7 l
	0.3 kg



144721
Shoulder Bag M + 2 Pockets

	33 x 27 x 12
	12 l
	0.4 kg



144722
Backpack S

	24.5 x 29 x 11
	8 l
	0.4 kg



144723
Backpack

	27 x 35 x 12
	12 l
	0.4 kg

NEW



146342
Backpack 13.3"

	26.5 x 38 x 12.5
	13.5 l
	0.6 kg
	26.7 cm/10.5" - 26.6 x 18.3 x 1.5 cm
	33.8 cm/13.3" - 32.5 x 22.9 x 2 cm



144725
Waistbag S

	32 x 14 x 6
	2 l
	0.3 kg

DREAM2GO	NEW	148
DREAM2GO DISNEY	NEW	150
HAPPY SAMMIES ECO		152
HAPPY SAMMIES		156
MARVEL ULTIMATE 2.0 - SPIDER-MAN		158
DISNEY ULTIMATE 2.0 - MINNIE GLITTER		159
DISNEY ULTIMATE 2.0 - MICKEY AND DONALD STARS		160
DISNEY ULTIMATE 2.0 - CARS	NEW	161
DISNEY ULTIMATE 2.0 - FROZEN		162





KIDS &
LICENSES

KIDS &
LICENSES

KIDS &
LICENSES

KIDS &
LICENSES

KIDS &
LICENSES

KIDS &
LICENSES

**KIDS &
LICENSES**

KIDS &

Dream2Go, the ride-on friend, is always at your side for all your holidays, sleepovers and playtime at home. Perfect to keep kids entertained and parents carefree while travelling.

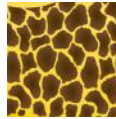
- Made in Europe
- Shells made from at least 70% post-consumer recycled Polypropylene waste
- Lightweight
- Spacious interior compartments with cross ribbons
- Leash that can be pulled and used as a shoulder strap or to secure the case at check-in



Tiger T.
7259



Puppy P.
9568



Giraffe G.
9955



Dinosaur D.
9956



School Bus
9957



Ice Cream Van
9958



Motorbike
9959

LIMITED
5 year
WARRANTY



recycleX



Durable wheels



2-point fixed lock to secure your belongings







Easy-to-grab webbing handles





145033

Ride-on Suitcase

	52 x 38 x 21
	30 l
	2,1 kg
	

Dream2Go, the ride-on friend, is now available in your beloved Disney characters. Perfect to keep kids entertained and parents carefree while travelling.

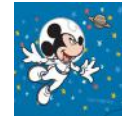
- Made in Europe
- Shells made from at least 70% post-consumer recycled Polypropylene waste
- Lightweight
- Spacious interior compartments with cross ribbons
- Leash that can be pulled and used as a shoulder strap or to secure the case at check-in



Frozen
4427



Minnie Glitter
7064



Mickey Stars
9548



Cars
4429



LIMITED
5 year
WARRANTY



recycleX

Durable wheels



2-point fixed lock to secure your belongings



Easy-to-grab webbing handles





© Disney/Pixar



© Disney



145048

Ride-on Suitcase Disney



52 x 38 x 21



30 l

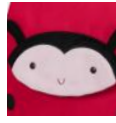


2.1 kg



The Happy Sammies Eco family, made out of Recyclex™, embrace the cute companions of your kids.

- Lifestyle approach with unique 3D details
- Sternum straps & ergonomic Backpack straps with reflective strips
- ID tag
- Lifestyle Sammies logo patch



Ladybug Lally
9676



Lion Lester
9674



Penguin Peter
9675



Raccoon Remy
8734



142477

Toilet Kit Ladybug Lally

	22 x 14 x 9
	2.5 l
	0.1 kg



142478

Backpack S Ladybug Lally

	24 x 27,5 x 14,5
	7.5 l
	0.2 kg



142476

Backpack S+ Ladybug Lally

	26 x 32 x 15
	11 l
	0.2 kg



142475

Upright 45 Ladybug Lally





	36 x 45 x 18
	23 l
	1.6 kg





142469





Toilet Kit Lion Lester

	22 x 14 x 9
	2.5 l
	0.1 kg
	



142470





Backpack S Lion Lester

	24 x 27.5 x 14.5
	7.5 l
	0.2 kg
	



142431

Backpack S+ Lion Lester

	26 x 32 x 15
	11 l
	0.2 kg
	







142430

Upright 45 Lion Lester

	36 x 45 x 18
	23 l
	1.6 kg
	







142473
**Toilet Kit
Penguin Peter**

	22 x 14 x 9
	2.5 l
	0.1 kg
	







142474
**Backpack S
Penguin Peter**

	24 x 27.5 x 14.5
	7.5 l
	0.2 kg
	

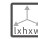





142472
**Backpack S+
Penguin Peter**

	26 x 32 x 15
	11 l
	0.2 kg
	







142471
**Upright 45
Penguin Peter**

	36 x 45 x 18
	23 l
	1.6 kg
	



132081





**Toilet Kit
Raccoon Remy**

	22 x 14 x 9
	2.5 l
	0.1 kg
	



132082





**Backpack S
Raccoon Remy**

	24 x 27.5 x 14.5
	7.5 l
	0.2 kg
	



132079



**Backpack S+
Raccoon Remy**

	26 x 32 x 15
	11 l
	0.2 kg
	



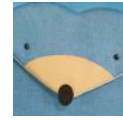
132078

**Upright 45
Raccoon Remy**

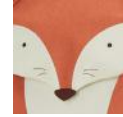
	36 x 45 x 18
	23 l
	1.6 kg
	

Dream away with our original lifestyle collection in a variety of cute animal characters!

- Cute, character-themed zipper puller on upright & toilet kit
- Lifestyle approach with unique 3D details
- Sternum straps & ergonomic Backpack straps with reflective strip
- ID tag



Hedgehog Harris
7734



Fox William
6562



Sammies
by Samsonite

93445

Toilet Kit Fox William



	21.5 x 13 x 8
	2 l
	0.1 kg



93444

Backpack S Fox William

	24 x 27.5 x 14
	7.5 l
	0.2 kg



93431

Upright 45 Fox William

	36 x 45 x 17.5
	24 l
	1.6 kg



120318

Backpack S Hedgehog Harris

24 x 28 x 14



7 l



0.2 kg



120322

Backpack S+ Hedgehog Harris

28 x 34 x 15



11 l



0.2 kg



120319

Upright 45 Hedgehog Harris

35 x 45 x 19



23 l



1.6 kg



With the MARVEL Ultimate 2.0 Spider-Man collection, kids will be all set to embark on great travel adventures!

- Towel embroidery Spider-Man details on all bags
- Themed zipper pullers and embossed character on the Spinner
- ID tags on all bags



Spider-Man
5059



© Disney
© MARVEL



131856
Spinner 45 MARVEL

	33 x 45 x 20
	23.5 l
	1.7 kg



131853
Backpack S MARVEL

	23.5 x 28.5 x 13.5
	7 l
	0.3 kg



131854
Backpack S+ MARVEL

	26 x 35 x 15
	11 l
	0.3 kg

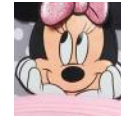


131855
Backpack M MARVEL

	30 x 42 x 16
	16 l
	0.4 kg

Minnie fans will be delighted with our Disney Ultimate 2.0 Minnie Glitter collection for 3 to 6 year-olds.

- 3D design: glittery Minnie bow and felt ears on the backpack
- Winning combination of pink with white polka dots
- Embossed Minnie on the Spinner
- Forms a matching set with the Minnie Glitter Dream2Go Disney ride-on



Minnie Glitter
7064

Disney

© Disney



106711

Spinner 46 Disney

	32 x 46.5 x 23
	20.5 l
	1.7 kg



106708

Backpack S+ Disney

	22 x 35 x 14.5
	11.5 l
	0.2 kg



106707

Backpack S Disney

	23.5 x 28.5 x 13.5
	7 l
	0.2 kg

S-shaped shoulder straps and sternum straps



DISNEY ULTIMATE 2.0™

8744

Mickey and Donald are ready to join the Disney Ultimate 2.0 collection in a dreaming starry version.

- Donald's hat and Mickey's ears are made out of embroidered soft fleece adding a playful touch to the collection
- Themed zipper pullers and embossed character on the Spinner
- ID tags on all bags
- Forms a matching set with the Dream2Go Disney ride-on

Disney

© Disney

Disney
MICKEY
AND FRIENDS



Mickey Stars
9548



Donald Stars
9549



Mickey and Donald Stars
9550



140110
Spinner 46*

	33 x 46.5 x 22.5
	20.5 l
	1.7 kg



140106
Backpack S

	23.5 x 28.5 x 13.5
	7 l
	0.3 kg



140108
Backpack S+

	26 x 35 x 15
	11 l
	0.3 kg



140111
Backpack S

	23.5 x 28.5 x 13.5
	7 l
	0.3 kg



140113
Backpack S+

	26 x 35 x 15
	11 l
	0.3 kg

*only available in colour 9550

Your kids will cross the finish line speeding into their adventures alongside the invincible Lightning Mc Queen!

- Themed zipper puller
- Backpacks are completely made from Recycled PET fabric (exterior fabric & interior lining)
- Interior lining made from RPET fabric on Spinner 45
- Forms a matching set with the Dream2Go Disney ride-on



148045

Spinner 45 Disney

	33 x 45 x 20
	23.5 l
	1.7 kg



148043

Backpack S

	23.5 x 28.5 x 13.5
	7 l
	0.3 kg



148044

Backpack S+

	26 x 35 x 15
	11 l
	0.3 kg

Cars
4429

Disney

© Disney

Disney PIXAR Cars

© Disney/Pixar

RECYCLEX™
RECYCLED PET FABRIC

Rubberised puller



Embroidery patches

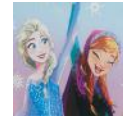


Flag print on zipper raincover



Anna, Elsa and the most cuddly Olaf are ready to join the Disney Ultimate 2.0 family to accompany your kids during their magic daily adventures.

- Themed zipper pullers
- Embossed characters on the Spinner
- Forms a matching set with the Frozen Dream2Go Disney ride-on
- Backpacks are completely made by Recycled PET (Recyclax™) fabric (exterior fabric & lining)
- Interior lining made from Recycled PET fabric on Spinner 45



Frozen
4427



recyclax™



Disney Frozen logo patch



Rubberised snowflake puller





145740

**Backpack S
Disney Frozen**

	23.5 x 28.5 x 13.5
--	--------------------

	7 l
--	-----

	0.3 kg
--	--------



145742

**Backpack S+
Disney Frozen**

	26 x 35 x 15
--	--------------

	11 l
--	------

	0.3 kg
--	--------



145743

**Spinner 46
Disney Frozen**

	33 x 46.5 x 22.5
--	------------------

	20.5 l
--	--------

	1.7 kg
--	--------



ALU DROP S
RAIN PRO
WOOD CLASSIC S

166
168
170





UMBRELLAS
UMBRELLAS
UMBRELLAS
UMBRELLAS
UMBRELLAS
UMBRELLAS
UMBRELLAS
UMBRELLAS
UMBRELLAS
UMBRELLAS
UMBRELLAS
UMBRELLAS
UMBRELLAS
UMBRELLAS
UMBRELLAS
UMBRELLAS
UMBRELLAS
UMBRELLAS
UMBRELLAS
UMBRELLAS
UMBRELLAS
UMBRELLAS
UMBRELLAS
UMBRELLAS

ALU DROP S™



9061

A line with a wide assortment of styles and colours for every kind of use and taste.



- Lightness thanks to the aluminium construction
- Largest assortment of colours and models in our category

	Black 1041		Raspberry Rose* 6264
	Indigo Blue 1439		NEW Turquoise 1879
	Tomato 1868		NEW Yellow 1924
	Sunset Red Polka Dots* 9683		NEW Beige Check 9681
	Violet Pink Polka Dots* 9684		NEW Lavender Check A024
	Yellow Polka Dots* 9685		NEW Petrol Green Check A025
			NEW Dark Pink 6898
			NEW Grass Green 1385
			NEW Dark Pink/Grass Green A023

NEW

146303
Stick Lady Auto Open


 87 cm	 0.28 kg
 103 cm	 AUTO O/C
 1	 NO
 YES	





108963
4 Sect. Auto O/C








 20.5 cm	 0.28 kg
 89 cm	 AUTO O/C
 4	 NO
 YES	

*until stock depletion



108962
3 Sect. Manual Flat



 23 cm  0.16 kg
 Ø 94.5 cm  MANUAL
 3  YES
 YES



108965
3 Sect. Auto O/C slim



 26 cm  0.24 kg
 Ø 95 cm  AUTO O/C
 3  NO
 YES



108966
Safe 3 Sect. Auto O/C




 28.5 cm  0.31 kg
 Ø 98 cm  SAFE AUTO O/C
 3  NO
 YES







108960
Stick Man Auto Open



 96 cm  0.48 kg
 Ø 115 cm  AUTO O
 1  YES
 YES

Unisex range at entry price level for practical and easy use.

- Functional design and construction
- Fabric with teflon coating
- Samsonite logo on the handle and pouch



	Black 1041		Light Plum 7819
	Blue 1090		Orange 1641
	Pistachio Green* 0588		Jeans* 1459
	Burnt Orange* 1156		
	Violet Pink* E457		




56157








3 Sect. Ultra Mini Flat


 22.5 cm	 0.16 kg
 88.5 cm	 MANUAL
 3	 YES
 YES	

56158

3 Sect. Manual Flat

 24 cm	 0.16 kg
 97 cm	 MANUAL
 3	 YES
 YES	



*until stock depletion



56159
3 Sect. Auto O/C



- 28.5 cm
- 0.31 kg
- 98 cm
- AUTO O/C
- 3
- YES
- YES



56161
Stick Umbrella



- 87 cm
- 0.42 kg
- 103 cm
- AUTO O
- 1
- YES
- YES

WOOD CLASSIC S™

9063

A classic line, for those that love traditional wooden umbrellas.

- Subtle logo on pouch and canopy
- Solid shaft and frame
- Classic black colour and new check print
- Plastic handle on new check print



Black
1041



108979

3 Sect. Auto O/C Short

Size 27 cm

0.3 kg

Ø 97 cm

AUTO O/C

3

YES

YES

Wooden handle





108978
3 Sect. Auto O/C Crook

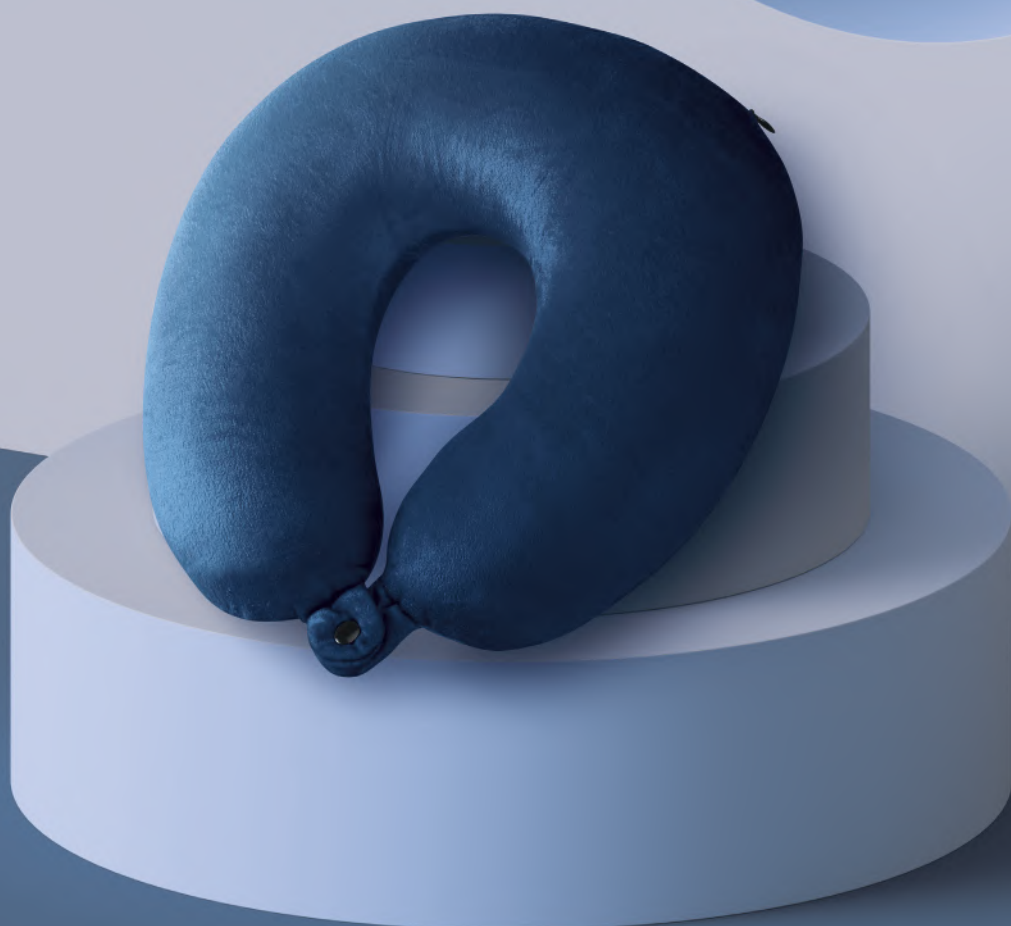
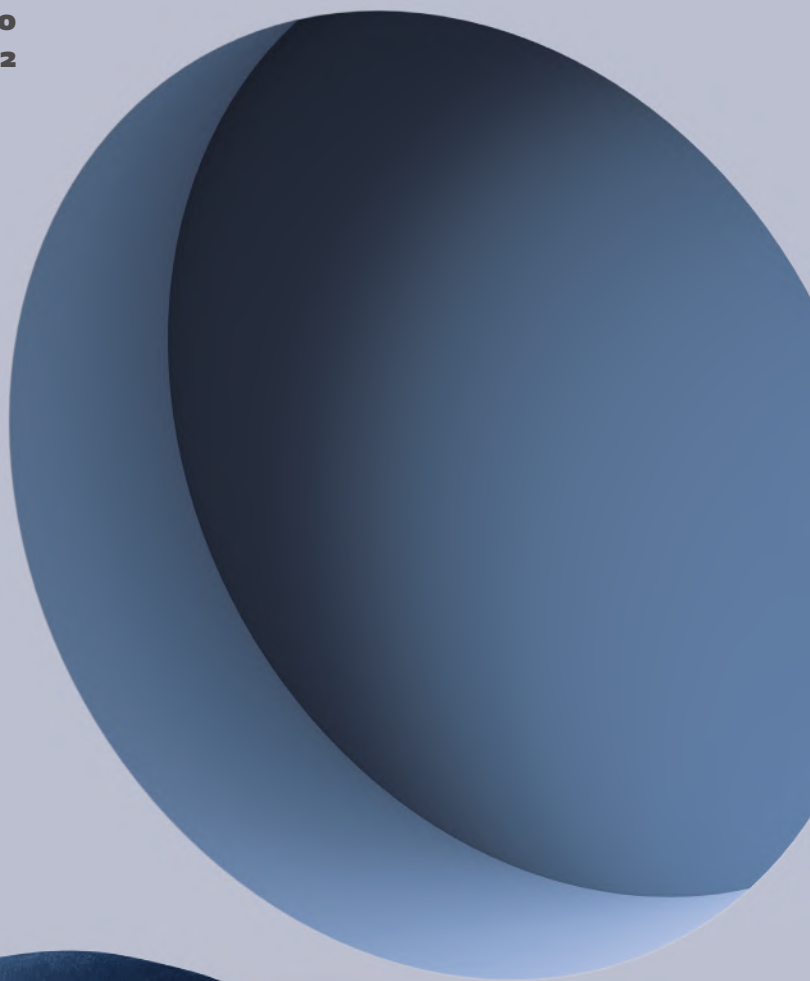
- ☰ 33 cm
- ⊘ 97 cm
- ⌞ 3
- ☂ YES
- 📦 0.35 kg
- ⚙️ AUTO O/C
- ☞ YES



108980
Stick Man Auto Open

- ☰ 97.5 cm
- ⊘ 120 cm
- ⌞ 1
- ☂ YES
- 📦 0.5 kg
- ⚙️ AUTO O
- ☞ YES

PACK-SIZED	174
GLOBAL TRAVEL ACCESSORIES	
- LUGGAGE ACCESSORIES	176
- PACKING ACCESSORIES	178
- COMFORT TRAVELLING	180
- ELECTRONIC ACCESSORIES	182



ACCESSORIES
ACCESSORIES
ACCESSORIES
ACCESSORIES
ACCESSORIES
ACCESSORIES
ACCESSORIES
ACCESSORIES
ACCESSORIES
ACCESSORIES
ACCESSORIES
ACCESSORIES
ACCESSORIES
ACCESSORIES
ACCESSORIES
ACCESSORIES
ACCESSORIES
ACCESSORIES
ACCESSORIES
ACCESSORIES
ACCESSORIES
ACCESSORIES
ACCESSORIES
ACCESSORIES
ACCESSORIES
ACCESSORIES

A set of 3 packing cubes that allows you to be extra organised when packing your bag for your next adventure!

- Available in four colours and 3 sizes: L/M/S
Dedicated label per size with frontal mesh to allow you to see what's inside
- Lightweight & washable
- Fabric made from recycled PET bottles, part of our Recyclax™ Material Technology Initiative



Black
1041



Forest
1338



Navy
1596



Rose
1751





146885

Set of 3 packing cubes

14 x 23 x 8



22 x 23 x 8



30 x 35 x 10



LUGGAGE ACCESSORIES

Engineered to make it easier to identify or to secure your luggage.

- Wide assortment of luggage straps and locks with TSA
- Luggage covers for extra suitcase protection
- Identify your luggage with one of our luggage tag



Black
1041



Midnight Blue
1549



Red
1726



Sunflower
2022



Pale Rose Pink
5266



121294
Key Lock TSA x 2



121224
Foldable Luggage Cover M



122290
Combilock 3 Dial TSA Light



121223
Foldable Luggage Cover L/M



121296
Cablelock 3 Dial TSA



121220
Foldable Luggage Cover XL



121264
Manual Scale



122291
Digital Luggage Scale



121312
Luggage Strap 50 mm



121307
**Rectangle Luggage Tag
x 2**



121313
**Luggage Strap/TSA
Lock**

PACKING ACCESSORIES

Keep your personal belongings safe with our pouches, belts and passport covers.

- All the items are well organised and functional
- Some items have RFID protection



Black
1041



Midnight Blue
1549



Eclipse Grey
2957



Red*
1726



Translucent
1873



121267
Foldable Backpack



121266
Foldable Duffel



121265
Foldable Duffel XL



121362
Bottle Set Pack of 4

*until stock depletion



121374

RFID Money Belt



121373

Hanging Toiletry Kit*

Toilet kit comes with transparent pouch



COMFORT TRAVELLING

With our Samsonite pillows and eyeshades, we try to maximize your comfort while taking a rest.

- Compression socks for long-haul flights
- Pillows to offer you the right neck support
- Eyeshades for a premium sleep while travelling



Black
1041



Midnight Blue
1549



Graphite
1374



121231
Inflatable Pillow



121234
Easy Inflatable Pillow

Our packaging have the FSC certificate





121240
Reversible Pillow



121241
Memory Foam Pillow



121244
**Memory Foam Pillow/
Pouch**



121250
Eye Mask and Earplugs

ELECTRONIC ACCESSORIES

Charge your electric devices through our Samsonite adaptors, that have all needed certifications.

- To charge all your electronic devices
- All items have the needed certifications



Black
1041



121532

**Worldwide Adapter +
USB**

C-LITE TOILET KIT
RESPARK TOILET KIT
STACKD TOILET KIT

184
186
188

TOILET KITS
TOILET KITS
TOILET KITS
TOILET KITS
TOILET KITS

TOILET KITS



C-LITE TOILET KIT™

C428

An elegant line of toilet kits to keep your products organised on trips away. Whatever you're packing, put it all into this chic line, the pearly effect of PU will allow you to travel in style.

- Feminine look enriched by pearly effect
- Elegant details
- Made of soft PU

MATCHES
C-LITE P. 14



Chili Red
1198



Midnight Blue
1549



Off White
1627



Elegant pullers

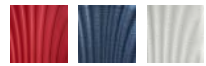


Samsonite swirl logo



Interior organisation





142674

Beauty Case



24 x 16 x 14

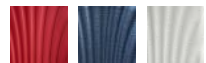


142675

Toilet Pouch



22 x 15 x 8.5



142676

Hanging Toilet Kit



26 x 18 x 15



RESPARK TOILET KIT™

D008

This toilet kit line is the perfect match with Respark, it stands out for durability and classic design. Even on a business trip or a leisure travel, it allows to keep the toiletries organized.

- Exterior fabric and interior lining made from recycled PET bottles, part of our Recyclex™ Material Technology Initiative
- Shiny nickel details
- Removable inner waterproof pouch

MATCHES
RESPARK P. 60



Forest Green
1339



Midnight Blue
1549



Ozone Black
7416



Metal pullers



Interior organisation



Samsonite metal plate logo





145864

Toilet Pouch



23 x 12 x 13



145865

Hanging Toilet Kit



25.5 x 11.5 x 18.5



145866

Weekender



26 x 15 x 11



STACKD TOILET KIT™

C430

Born to be agender, Stackd Toilet kit, with its contemporary design and full interior organisation, will accompany you in every journey, from daily adventures to holidays.

- Agender design enriched by active details
- Made out of 50% RPET Polyester and 50% PU
- Embossed stripes print with Samsonite logo plate



Black
1041



Navy
1596



Forest
1338



Rose
1751

MATCHES

STACKD P. 32 AND STACKD BIZ P. 112



Handy zipper pullers



PU bottom insert featuring an embossed stripes print



Detailed interior organisation





142788

Weekender



22 x 14 x 9



142789

Hanging Toilet Kit



24 x 17 x 10



142787

Toilet Pouch



26 x 15 x 11

ALU FIT	192
PRO-DLX 6 SLG	194
FLAGGED SLG	198
VEGGY SLG	200
ATTACK 2 SLG	202



Alu Fit is the innovative solution for storing, carrying and protecting all your cards.

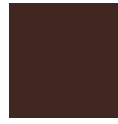
- RFID and NFC protection
- Slim design
- Store up to 6 cards (flat) or up to 4 with embossed types



Black*
1041



Blue*
1090



Dark Brown*
1251



Red
1726



True Blue
1875



Aluminium
1004



Anthracite
1009



Orange*
1641



Climbing Ivy*
9199



RFID protection



Premium Leather finishing



Sliding button



*on selected items



Samsonite Alu Fit - Innovative...



LEATHER GOODS

Easy access
holds up to
6 cards



133888

201 - SLIDE-UP CASE



6.4 x 10.2 x 1

RFID 1 [€] 6/4



133890

202 - SLIDE-UP WALLET



6.6 x 10.2 x 2.1

RFID 1 [€] 6/4

PRO-DLX 6 SLG™

C823

The facelift of our core SLG line maintaining its bold and masculine design and anticipating the design of PRO-DLX 6 Business.

- RFID protection
- Featuring new and trendy models
- New shiny samsonite logo

MATCHES

PRO-DLX 6 P. 92



Black
1041



144534

**005 -
B 8 CC+2 C**



13 x 9.7 x 1

RFID 2 8 6

Enriched with pattern on front



Recessed logo plate with shiny Samsonite logo



Red contrast color





144537
**047 -
 B 10CC+VFL+C+2C**



13 x 9.6 x 1

RFID 2 10 6



144538
**015 -
 B 4CC+2C+C**



12.2 x 9.7 x 1.5

RFID 2 4 3



144539
**046 -
 B 6CC+VFL+2C+C**



10.5 x 8.5 x 1.5

RFID 2 6 2



144540
**143 -
 W S 8CC+HFL+2C**



8.5 x 11.7 x 1

RFID 2 8 2



144546

**727 -
All in One Wallet ZIP**



9 x 13 x 1

RFID 12



144547

**732 -
6CC H S**



7.6 x 10 x 0.5

RFID 6



144548

**048 -
B 9CC+ZC+C**



10 x 8.8 x 1

RFID 2 9



144549

**049 -
B S 9CC+VFL+2C+W**



10.5 x 8.8 x 1

RFID 2 9 2

Conceived for a younger consumer, the line is characterized by a color touch on the outside and a coloured lining on the inside adding value to the style and differentiating the line without being too bold.

- RFID protection
- Coloured detail on the outside dedicated colored fabric lining



Black
1041



Oxford Blue
1647



139943

**015 -
B 4CC+2C+C**



12 x 9.5 x 1.5

RFID 2 [€] 4 [€] 3 [€] [€]

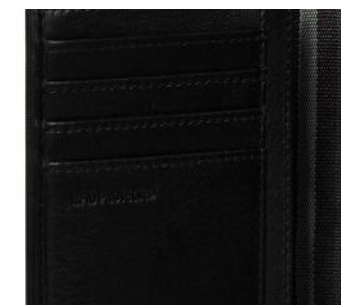
Debossed logo with coloured detail



Coloured lining



RFID protection



139945

**001 -
B S 6CC+2C**



10.5 x 9 x 1

RFID 2 [€] 6 [€] 2 [€]



139951
**528 -
Key Ring 2R**



8 x 2 x 1



140977
**046 -
B 6CC+VFL+2C+C**



10.5 x 8.5 x 1.5

RFID 2 6 2



144467
**047 -
B 10CC+VFL+C+2C**



13 x 9.6 x 1

RFID 2 10 6



144468
**048 -
B 9CC+ZC+C**



10 x 8.8 x 1

RFID 1 1 9



144469
**144 -
W S 8CC+HFL+C+2C**



9.5 x 10.6 x 1.5

RFID 2 8 1



144470
**145 -
W 14CC+W+2C**



8.9 x 12.6 x 2

RFID 2 14 3

Veggy is a full vegetable tanned leather line with a small touch of modernity thanks to the two orange stitches on the inside. The perfect combination between simple and sporty design, minimal but modern also thanks to the embossed oblique logo.

- RFID protection
- Sticking in contrast on the inside



Dark Brown
1251



144476
**005 -
B 8 CC+2 C**



13 x 9.7 x 1

RFID 2 8 6



144477
**047 -
B 10CC+VFL+C+2C**



13 x 9.6 x 1.5

RFID 2 10 6

Embossed Logo



Contrast details



Vegetal oiled leather line





144478
**015 -
B 4CC+2C+C**



12.2 x 9.7 x 1.5

RFID 2 € 4 3 ☞



144479
**046 -
B 6CC+VFL+2C+C**



10.5 x 8.5 x 1.5

RFID 2 € 6 2 ☞



144480
**144 -
W S 8CC+HFL+C+2C**



9.5 x 10.6 x 2

RFID 2 € 8 1 ☞



144481
**147 -
W 15CC+HFL+C+Z+2C**



10.4 x 12.8 x 2

RFID 2 € 15 4 ☞



144482
**524 -
Z Round Key Pouch+2R**



11.6 x 7 x 1.5



144483
**722 -
8CC H S+ 2 GUSS ZIP**



8 x 10.8 x 1

RFID 8 ☞



144484
**733 -
All in One Wallet S**



8.7 x 11.8 x 0.5

RFID 10 2 ☞



144485
**049 -
B S 9CC+VFL+2C+W**



10.5 x 8.8 x 1.5

RFID 2 € 9 2 ☞

Full Cowhide Small Leather Goods collection with traditional functionality and sporty look.

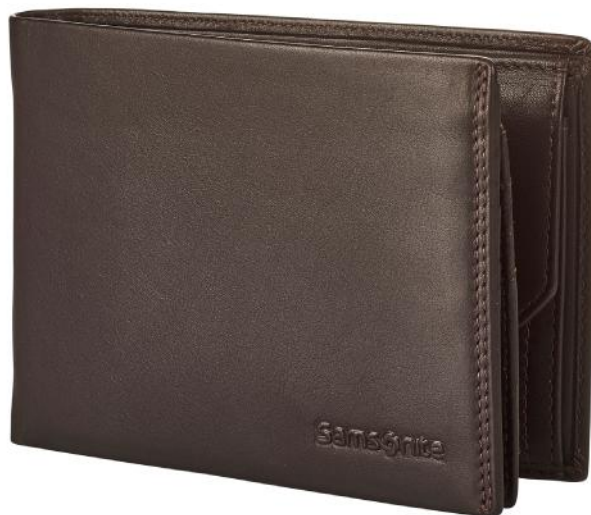
- Leather zipper pullers with metal button
- Shiny metal zippers
- RFID protection



Black
1041



Ebony Brown
1320



100 % Cowhide leather



Double stitching



Debossed Samsonite logo





127078
524-Z Round Key Pouch+2R

 11.6 x 7 x 1.5





140976
046 - B 6cc+VFL+2C+C

 10.5 x 8.5 x 1.5

 2  6  2 



144440
702 - 8CC H + Z COMP

 9 x 12.4 x 1

  8  4 



144442
722 - 8CC H S + 2 GUSS ZIP

 8 x 10.8 x 1

  8 

Full Cowhide Small Leather Goods collection with traditional functionality and sporty look.

- Leather zipper pullers with metal button
- Shiny metal zippers
- RFID protection



144446

047 - B
10CC+VFL+C+2C



13 x 9.6 x 1.5

RFID 2 10 6



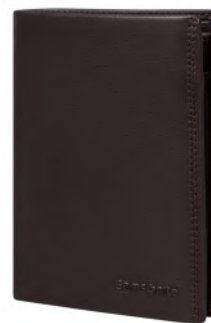
144447

144 - W S
8CC+HFL+C+2C



9.5 x 10.6 x 2

RFID 2 8 1



144448

146 - W
12CC+HFL+2C+W



9.6 x 12.5 x 1.5

RFID 2 12 3



144451

147 - W
15CC+HFL+C+Z+2C



10.4 x 12.8 x 2

RFID 2 15 4



144453

049 - B S
9CC+VFL+2C+W



10.5 x 8.8 x 1.5

RFID 2 9 2



123997

**005 -
B 8 CC+2 C**



13 x 9.7 x 1

RFID 2 8 6



135052

**013 -
B 11CC+HFL+C+2C+W**



12.8 x 10 x 2

RFID 1 2 11 2



123999

**015 -
B 4CC+2C+C**



12.2 x 9.7 x 1.5

RFID 2 4 3



135059

**502 -
K Hanger 6 Hooks**



6 x 13 x 2

1 2



135058

**732 -
6CC H S**



7.6 x 10 x 0.5

1 6

OVERVIEW

CABIN

HARDSIDE

40 x 55 x 20



LITE-BOX
SP 55



C-LITE
SP 55



MAGNUM ECO
SP 55



ESSENS
SP 55

HARDSIDE

40 x 55 x 20 (≤ 23)



LITE-BOX ALU
SP 55



MAJOR-LITE
SP 55 EXP



C-LITE
SP 55 EXP



C-LITE LTD
SP 55 EXP



C-LITE DISNEY
SP 55 EXP



PROXIS
SP 55 EXP



ATTRIX
SP 55 EXP



NEOPOD
SP 55 EXP SLIDE OUT
POUCH



NUON
SP 55 EXP



UPSCAPE
SP 55 EXP



STACKD
SP 55 EXP



STACKD DISNEY
SP 55 EXP MINNIE
BOW



STACKD DISNEY
SP 55 EXP BLACK
PANTHER



STACKD DISNEY
SP 55 EXP MARVEL
COMICS

HARDSIDE

35 x 55 x 23 (≤ 26)



PROXIS
SP 55 EXP L35



ATTRIX
SP 55 EXP L35

HARDSIDE

40 x 55 x 23 (≤ 27)



NEOPOD
SP55 EXP EASY ACCESS



STACKD
SP 55 EXP EASY ACCESS

OVERVIEW

Selection

OVERVIEW

CABIN

SOFTSIDE

40 x 55 x 20



SPECTROLITE 3.0 TRVL
SP 55



D'LITE
SP 55



RESPARK
SP 55 STRICT



VAYCAY
SP 55 L40



LITEBEAM
UPR 55



LITEBEAM
SP 55



ECODIVER
DUFFLE/WH 55



PRO-DLX 6
SP 55 STRICT



PRO-DLX 6
TRI-FOLD GARMENT
BAG

SOFTSIDE

40 x 55 x 23 (≤ 27)



SPECTROLITE 3.0
TRVL
UPR 55 EXP



SPECTROLITE 3.0
TRVL
SP 55 EXP DF



RESPARK
UPR 55 EXP



RESPARK
SP 55 DF EXP



VAYCAY
SP 55 DF EXP



ECODIVER
SP DUFFLE 55

SOFTSIDE

40 x 55 x 22 (≤ 25)



D'LITE
UPR 55 EXP



D'LITE
SP 55 EXP



PRO-DLX 6
UPR 55 EXP



ECODIVER
DUFFLE/WH55 BP

SOFTSIDE

35 x 55 x 22 (≤ 25)



RESPARK
SP 55 EXP L35



VAYCAY
SP 55 EXP L35



ECODIVER
DUFFLE/WH 55
L35 DF



ROADER
DUFFLE/WH 55 L35

SOFTSIDE

UNDERSEATERS



RESPARK
UPR 45 UNDERSEATER



LITEBEAM
UPR 45 UNDERSEATER

OVERVIEW

CABIN

SOFTSIDE

OTHERS



ROADER
LAPTOP BP/WH 55



PRO-DLX 6
LAPT. BP/WH 17.3"



PRO-DLX 6
ROLLING TOTE 15.6"



PRO-DLX 6
SP TOTE 15.6"



PRO-DLX 6
SP 55 EXP



SPECTROLITE 3.0
ROLLING TOTE 15.6"

SOFTSIDE

TRAVEL BACKPACKS



ECODIVER
TRAVEL BACKPACK S



ECODIVER
TRAVEL BACKPACK M



ROADER
TRAVEL BACKPACK S



ROADER
TRAVEL BACKPACK M

OVERVIEW

DUFFLES - BEAUTY CASES - TOILET KITS

SOFTSIDE

DUFFLES ON WHEELS



ECODIVER
DUFFLE/WH 67



ECODIVER
DUFFLE/WH 79



ECODIVER
SP DUFFLE 79



ROADER
DUFFLE/WH 68



ROADER
DUFFLE/WH 79



SECURIPAK
DUFFLE/WH 55
L 35CM DF

SOFTSIDE

DUFFLES



RESPARK
DUFFLE 55
OVERNIGHTER



RESPARK
DUFFLE 48
TWNIGHTER



VAYCAY
DUFFLE 53



ECODIVER
DUFFLE S



ECODIVER
DUFFLE M



ECODIVER
DUFFLE L



ROADER
DUFFLE XS



ROADER
DUFFLE S

SOFTSIDE

BEAUTY CASES - TOILET KITS



STACKD
BEAUTY CASE



D'LITE
BEAUTY CASE



VAYCAY
TOILET KIT



ECODIVER
TOILET KIT

OVERVIEW

CABIN

HARDSIDE

40 x 55 x 20



LITE-CUBE DLX
SP 55



LITE-CUBE
SP 55



LITE-SHOCK
SP 55



S'CURE ECO
SP 55 POST CONSUMER



S'CURE ECO
SP 55



S'CURE
SP 55

CABIN

SOFTSIDE

40 x 55 x 20



AIREA
SP 55 STRICT



BASE BOOST
UPR 55 L40 CM



BASE BOOST
SP 55



CITYBEAT
UPR 55

SOFTSIDE

40 x 55 x 20 (≤ 23)



AIREA
UPR 55 EXP
TOP POCKET



MIDTOWN
DUFFLE/WH 55 BP

SOFTSIDE

35 x 55 x 20 (≤ 25)



AIREA
SP 55 EXP L35



CITYBEAT
SP 55 L35

OVERVIEW

CABIN

SOFTSIDE

OTHERS



VECTURA EVO
ROLLING TOTE 17.3"



LITEPOINT
LAPT. BP/WH 17.3"



MYSIGHT
LAPT. BP/WH 17.3"



GUARDIT 2.0
LAPT. BP/WH 15.6"



GUARDIT 2.0
ROLLING TOTE 17.3"

SOFTSIDE

DUFFLES



MIDTOWN
DUFFLE/WH 79



AIREA
DUFFLE 45



ONGOING
DUFFLE

BEAUTY CASES - TOILET KITS

SOFTSIDE

BEAUTY CASES



C-LITE
BEAUTY CASE



STACKD
WEEKENDER



RESPARK
WEEKENDER



AREA
BEAUTY CASE

SOFTSIDE

TOILET KITS



C-LITE
TOILET POUCH



C-LITE
HANGING TOILET KIT



STACKD
HANGING TOILET KIT



STACKD
TOILET POUCH



RESPARK
HANGING TOILET KIT



RESPARK
TOILET POUCH



AREA
TOILET KIT

AIRLINE CABIN LUGGAGE

MAXIMUM EXTERNAL DIMENSIONS and Weight allowed in Economy Class

Samsonite cannot be held responsible if an airline applies other cabin size standards. Always check restrictions with the airline when booking a flight.

	Airline	Max. dimensions	Max. weight		Airline	Max. dimensions	Max. weight
	Aegean Airlines	56 x 45 x 25 cm	8 kg		BMI Regional	55 x 40 x 23 cm	12 kg
	Aer Lingus	55 x 40 x 24 cm	10 kg		British Airways	56 x 45 x 25 cm	23 kg
	Aeroflot	55 x 40 x 25 cm	10 kg		Brussels Airlines	55 x 40 x 23 cm	8 kg
	Aerolíneas Argentinas	55 x 35 x 25 cm (max. 115 cm)	Domestic: 8kg International: 10kg		Cathay Pacific	56 x 36 x 23 cm	7 kg
	Aeromexico	55 x 40 x 25 cm (max. 115 cm)	10 kg		Cebu Pacific	56 x 36 x 23 cm	7 kg
	Air Belgium	55 x 35 x 25 cm	10 kg		China Airlines	56 x 36 x 23 cm	7 kg
	Air Canada	55 x 40 x 23 cm			CityJet	47.5 x 35 x 20 cm	12 kg
	Air Caraïbes	55 x 35 x 25 cm +40 x 15 x 30 cm	12 kg		Condor	55 x 40 x 20 cm	8 kg
	Air Europa	55 x 35 x 25 cm (max. 115 cm)	10 kg		Corsair	55 x 40 x 23 cm	12 kg
	Air France	55 x 35 x 25 cm	12 kg		Czech Airlines	55 x 45 x 25 cm	8 kg
	Air India	55 x 35 x 25 cm (max. 115 cm)	8 kg		Delta Airlines	56 x 35 x 23 cm	
	Air NUOVO Zealand	max. 118 cm	7 kg		easy Jet	45 x 36 x 20 cm	15 kg
	Air Transat	51 x 40 x 23 cm	10 kg		EL-AL Israel Airlines	56 x 45 x 25 cm (max. 115 cm)	8 kg
	ITA Airways	55 x 35 x 25 cm	8 kg		Emirates	55 x 38 x 20 cm	7 kg
	All Nippon Airways	55 x 40 x 25 cm (max. 115 cm)	10 kg		Ethiopian Airlines	55 x 40 x 23 cm	7 kg
	American Airlines	56 x 36 x 23 cm			Etihad Airways	56 x 36 x 23 cm	7 kg
	Arkia	55 x 40 x 20 cm	7 kg		Finnair	55 x 40 x 23 cm	8 kg
	Asiana Airlines	55 x 40 x 20 cm (max. 115 cm)	10 kg		Flybe	55 x 40 x 23 cm	10 kg
	Austrian Airlines	55 x 40 x 23 cm	8 kg		EUROWINGS	40 x 30 x 25 cm	8 kg

Last checked: November 2022

	Airline	Max. dimensions	Max. weight
	HOP!	55 x 35 x 25 cm (max. 115 cm)	12 kg
	Iberia	56 x 40 x 25 cm	10 kg
	Israil Airlines	50 x 40 x 20 cm	8 kg
	Japan Airlines	55 x 40 x 25 cm (max. 115 cm)	10 kg
	Jet Airways	55 x 35 x 25 cm (max. 115 cm)	7 kg
	Jet2	56 x 45 x 25 cm	8 kg
	KLM	55 x 35 x 25 cm	12 kg
	Korean Air	55 x 40 x 20 cm	12 kg
	LATAM Airlines	55 x 35 x 25 cm	8 kg
	LOT	55 x 40 x 23 cm	8 kg
	Lufthansa	55 x 40 x 23 cm	8 kg
	Malaysia Airlines	56 x 36 x 23 cm (max. 115 cm)	7 kg
	Norwegian	55 x 40 x 23 cm	10 kg
	Olympic Air	55 x 40 x 23 cm	8 kg
	Philippine Airlines	56 x 36 x 23 cm max. 115 cm	7 kg
	Qantas	56 x 36 x 23 cm (max. 115 cm)	10 kg
	Qatar Airways	50 x 37 x 25 cm	7 kg
	Royal Air Maroc	55 x 40 x 20 cm	10 kg

	Airline	Max. dimensions	Max. weight
	Ryanair	40 x 25 x 20 cm	10 kg
	Scandinavian Airlines	55 x 40 x 23 cm	8 kg
	Singapore Airlines	max. 115 cm	7 kg
	South African Airways	56 x 36 x 23 cm	8 kg
	Swiss International Airlines	55 x 40 x 23 cm	8 kg
	Tap Portugal	55 x 40 x 20 cm	10 kg
	Thai Airways	56 x 45 x 25 cm	7 kg
	Transavia	55 x 35 x 25 cm	10 kg
	TUfly	55 x 40 x 20 cm	10 kg
	Tunisair	max. 115 cm	8 kg
	Turkish Airlines	55 x 40 x 23 cm	8 kg
	United Airlines	56 x 35 x 22 cm	
	Vietnam Airlines	56 x 36 x 23 cm	10 kg
	Virgin Atlantic	56 x 36 x 23 cm max. 115 cm	10 kg
	Volotea	40 x 30 x 20 cm	10 kg
	Vueling	40 x 30 x 20 cm	10 kg
	Wizz Air	40 x 30 x 20 cm	10 kg

ICONS

	SIZE (L X H X W)		EASY ACCESS TICKET POCKET		MULTIWAY COMPRESS SYSTEM		TECH LOCKER™ INTERNAL ORGANISATION
	VOLUME		EASY PASS SYSTEM		MUSIC POCKET WITH HEADPHONE GATE		TO GO SIDE POCKET
	WEIGHT		ELASTIC LOOPS		NOTE COMPARTMENT		TRACKING SYSTEM
	ACCESSORY/CABLE POUCH		ERGONOMIC HANDLES		PACKING CUBES		TRANSPARENT PHONE POCKET
	ADAPTABLE LAPTOP COMPARTMENT		ERGONOMIC SHOULDER STRAPS WITH SHOCK ABSORBING SYSTEM		PERSONALISATION OPTION		TSA LOCK 2 COMPARTMENTS
	ADJUSTABLE STERNUM AND WAIST STRAP		ERGONOMIC STRAPS		PERSONALISATION TAG		TWO DIVIDER PADS
	ANTI THEFT SECURITY ZIPPER		EXPANDABLE		POCKET FOR SHOES & LAUNDRY		TUCK AWAY HIPBELT & SHOULDER STRAPS
	ANTI-SLIP SHOULDER STRAP		FIX IT™ FLEXIBLE ORGANISATION		POCKET FOR SUNGLASSES		UNDERWEAR POUCH
	BACKREST WITH AIR CIRCULATION SYSTEM		FLOATING DIVIDER 1		POWER BANK ORGANISATION		USB PORT
	BADGE POCKET		FLOATING DIVIDER 2		QUICK ACCESS POCKET™		VERTICAL LAPTOP ADJUSTMENT SYSTEM
	BATTERY CHARGER		FOLDABLE WHEELS		RAIN COVER		VERTICAL STRAPS
	BAYONET CLOSING		FRONT & BACK POCKET		REFLECTIVE DETAILS		WATER RESISTANT
	BOTTLE HOLDER		FRONT POCKET		REINFORCED BLADE CUT RESISTANT POCKET		WATER RESISTANT LAPTOP COMPARTMENT
	BOTTOM GRIP		GARMENT BAG		REMOVABLE BAG/POCKET		WET POCKET
	BUTTERFLY STRAPS		HANGERS		REMOVABLE LAPTOP COMPARTMENT		WHEEL COVER
	CABIN LUGGAGE		HANGING LOOP/HOOK		REMOVABLE LAPTOP/TABLET SLEEVE		WIDER BOTTOM PROTECTION
	CABLE LOCK WITH TSA FUNCTION		HELMET FASTENING SYSTEM		REMOVABLE LINING		WINDOW
	C-SHAPE COMPARTMENT		HIDDEN EXPANDABILITY		REMOVABLE SHOULDER STRAP		WITH LAPTOP COMPARTMENT
	CHECKPOINT WET POCKET		HIDDEN EXPANDIBILITY ON SUITCASE		REMOVABLE WET POCKET		WITH TABLET COMPARTMENT
	COIN POCKET		HORIZONTAL STRAPS		RFID BLOCKING MATERIAL		ZIP COIN POCKET
	COMBI LOCK WITH TSA FUNCTION		ID TAG		SECURE		ZIPPER PULLER BLOCKER
	COMBI PADLOCK WITH TSA FUNCTION		IN HEIGHT ADJUSTABLE CROSS RIBBONS		SEE-THRU™ MESH POCKET		ZIPPER PULLER LOCKING LOOP
	COMBINATION LOCK		INTEGRATED LUGGAGE SCALE		SHIRT POCKET		ZIPPER PULLER SECURITY HOOK
	COMBINATION PADLOCK		INTEGRATED TOP POCKET		SHOCK ABSORBER SYSTEM		UMBRELLA: ANTI-WIND PROTECTION
	COMPARTMENT		INTEGRATED WHEELS		SUSPENSION / SHOCK ABSORBING WHEELS		UMBRELLA: CANOPY DIAMETER
	COMPRESSIBLE PACKING SOLUTION		INTERNAL ORGANISATION		SLIDE-OUT POUCH		UMBRELLA: LENGTH CLOSED
	COMPRESSION STRAPS		JEWELLERY POUCH		SMART FIT LAPTOP SYSTEM		UMBRELLA: NR OF STAGES
	COSMETIC POCKET		KEY HANGER/KEY FIX SYSTEM		SMART FIX BUCKLE		UMBRELLA: OPENING
	CRADLE POCKETS		KEY LOCK		SMART OPENING		UMBRELLA: WEIGHT
	CREDIT CARD SLOT		KEY PADLOCK WITH TSA FUNCTION		SMART SLEEVE/SMART POCKET WHICH QUICKLY SLIPS OVER THE HANDLE OF AN UPRIGHT OR SPINNER CASE		UMBRELLA: WIND TUNNEL TESTED
	CROSS RIBBONS		M RIBBONS		STAINLESS STEEL WIRE INTEGRATED INTO THE ADJUSTABLE STRAPS		
	DIVIDER PAD		MAGNETIC EARPHONES HOLDER		STERNUM STRAP		
	DOCUMENT HOLDER		MASK POUCH		STURDY WHEELS		
	DOUBLE BOTTLE HOLDER		MIRROR				

EXPECT A CLEANER PLANET
Samsonite

www.samsonite.com